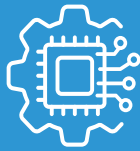


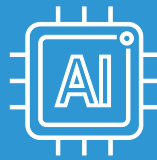


Elo AI Edge Pack

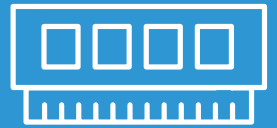
Edge Computing System



NVIDIA® RTX 5080 GPU or Hailo NPU acceleration



Up to 1800 TOPS of AI Performance



Up to 192GB DDR5 RAM & up to 4TB of storage

Product Overview

The Elo AI Edge Pack delivers enterprise-grade edge computing powered by an Intel® Core™ i9 processor with integrated Intel® Iris® graphics and choice of NVIDIA® RTX 5080 GPU or Hailo NPU acceleration, supporting up to 1800 TOPS of AI performance. By processing data locally, the Elo AI Edge Pack minimizes latency, strengthens security, and reduces cloud dependence—enabling real-time control for automation, AI computing, and data-heavy applications.

With support for up to 192GB DDR5 RAM, dual M.2 NVMe drives (RAID-capable), and up to 4TB of storage, the Elo AI Edge Pack provides the scalable edge computing, memory, and graphics performance needed to power current operations and prepare for next-generation innovation.

Processes workloads locally to cut latency, protect data, support compliance, and reduce cloud costs

Four LAN ports deliver redundant, high-throughput connectivity for reliable, hardwired performance

Compact design allows powerful compute to be closer to your data

Elo AI Edge Pack

Specifications	
Enclosure Color	Black
Operating System	No Operating System
Processor	Intel Processor i9 14900 (36M Smart Cache, up to 5.80 GHz)
Chipset	R680E
Graphics	Intel Graphics
BIOS	AMI - Note: Secure Boot setting default is enabled
Memory (RAM)	96GB 5600MHz DDR5 U-DIMM on 3 slot (Expandable to 192GB maximum on 4 slot - varies by model)
Storage	1TB M.2 PCIe (NVMe) SSD (2 slots - varies by model)
PCIe16 Addin Card	NVIDIA GeForce RTX 5080 Solid Core OC 16GB Hailo 0808S (varies by model)
IO Ports	4x RJ45 LAN (2.5 Gigabit) Port 8x USB 3.0 Ports 2x Display Ports 1x HDMI 1x VGA 3 x Audio Port (3.5 mm Line in/Out /Mic In) *RTX 5080 configuration includes an add-in I/O card providing additional 3x DisplayPort and 1x HDMI outputs.
TPM	TPM 2.0
Control Buttons	Power Button
Power Status Led	Off: no light, On: green, Sleep: flash green
Power Supply	AC input voltage: 100-240 VAC 850W Input frequency: 50-60 Hz Maximum output power: 66W (3.3V)*, 100W (5V)*, 849.6W (12V)** * Maximum continuous total DC output power should not exceed 850 W. ** Maximum continuous combined load on +3.3 VDC and +5 VDC outputs shall not exceed 100 W.
Power Consumption (Typical)	On: NVIDIA GeForce RTX 5080: 660 W On: Hailo 0808S: 280W Sleep: 3.4W Off: 0.7W
Dimensions	13.54" x 14" x 6.86" / 344 mm x 356.7 mm x 174.2 mm
Shipping Dimensions	18.5" x 18.5" x 14.5" / 470 mm x 470 mm x 370 mm
Weight	NVIDIA GeForce RTX 5080: 19.4 lbs / 8.9 kg Hailo 0808S: 17.6 lbs / 8 kg
Shipping Weight	NVIDIA GeForce RTX 5080: 28.6 lbs / 13 kg Hailo 0808S: 22 lbs / 10.3 kg
Temperature	Operating: 0°C to 35°C (32°F to 95°F)* Storage: -20°C to 60°C (-4°F to 140°F) *The thermal report pass airflow 0.5m/s + CPU Minimum assured power condition.
Humidity (non-condensing)	Operating: 20% to 80% \nStorage: 5% to 95% (38.7°C max wet bulb temperature)
Regulatory Approvals and Declarations	Canada cUL, IC United States UL, FCC RoHS CoC Japan VCC International CB
Real-Time Clock	Replaceable CR2032 lithium metal battery for clock
Warranty	3 years
Extended Warranty	4 year - Elo P/N: E819598; 5 year - Elo P/N: E819795 3 year + AUR - Elo P/N: E820186; 4 year + AUR - Elo P/N: E820388; 5 year + AUR - Elo P/N: E820582
Other Features	Serviceable internal components
What's in the Box	Elo Edge AI Pack, North America Power Cord / EU Power Cord (Varies by model), Quick Installation Guide (QIG), Cable tie

Ordering Information

Part Number	Addin Card	OS	Memory	Storage
E682675	NVIDIA GeForce RTX 5080	No OS	96GB	1TB
E745349	Hailo 0808S	No OS	96GB	1TB

Learn more about Elo at [EloTouch.com](https://www.elotouch.com).

Americas

Tel +1 408 597 8000
elosales.na@elotouch.com

Europe (EMEA)

Tel +32 16 930 136
EMEA.Sales@elotouch.com

Asia Pacific

Tel +86 (21) 3329 1385
EloAsia@elotouch.com

Elo reserves the right to change or update, without notice, any information contained herein; to change, without notice, the design, construction, materials, processing or specifications of any products; and to discontinue or limit production or distribution of any products. Elo and the Elo logo are trademarks of Elo Touch Solutions, Inc., registered in many jurisdictions worldwide. All other trademarks are the property of their respective owners. © 2026 Elo Touch Solutions, Inc. All rights reserved. 26042BES00220

