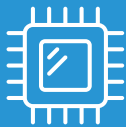




I-Series 3 Slate with Intel®

All-in-One Interactive Display



**Intel 11th Gen
Processors**



**FHD PCAP
Touchscreen**



**Fanless &
Ventless**

Product Overview

Built to be one of the thinnest commercial-grade fixed tablet form factors, the I-Series Slate delivers a 15.6-inch Full HD interactive display, powerful Intel processor and your choice of Windows, Chrome and Linux (SuSE, Ubuntu and Red Hat). Backed by reliable, enterprise-grade security and performance, the I-Series offers a modular platform with versatility to fit almost any application - from point-of-sale and interactive signage to self-service and automation controls.

**OS options include: Windows,
ChromeOS Flex and Linux**

**Modular design for flexible mounting
in portrait, landscape and table-top
orientations**

**Extend connectivity from the display
to your accessories with the I/O hub**

I-Series 3 Slate with Intel®

Model	Specifications
Enclosure Color	Dark Gray
Display	15.6" diagonal, active matrix TFT LED LCD
Aspect Ratio	16:9 (standard)
Active Display Area (W x H)	13.55" x 7.62" / 344 mm x 194 mm
Native (optimal) Resolution	1920 x 1080 @ 60Hz
Touch Technologies	10-touch TouchPro® PCAP
Colors	16.2M
Brightness (typical)	LCD panel: 300 nits; TouchPro PCAP: 255 nits
Response Time Total (typical)	25 msec
Viewing Angle (typical)	Horizontal: 85°/85° or 170° total / Vertical: 85°/85° or 170° total
Contrast Ratio (typical)	1000:1
Processor	Intel® Pentium® Processor J6426
Graphics	Intel UHD Graphics
BIOS	AMI
Memory (RAM)	8GB 3200MHz DDR4 SO-DIMM on 1 slot (Expandable to 32GB maximum on 1 slot)
Storage	128GB M.2 NVME SSD, 72 TBW; GB equals one billion bytes when referring to storage capacity. Accessible capacity may be less.
Operating Systems	No Operating System Microsoft Windows 10 IoT Enterprise LTSC 64-bit Microsoft Windows 11 IoT Enterprise LTSC 64-bit
I/O Ports	Display Head Interface: USB-C Connector Supports USB 2.0/3.0, DP Output (Requires 20V/40W USB-C Power Delivery 2.0 if not using I/O Hub for power) I/O Hub: DC Input 4 x USB-A 3.0 RJ45 Ethernet LAN (Gigabit) (w/o Wake on Lan at S5 support)
Wireless Connectivity	802.11 a/b/g/n/ac/ax 2.4GHz, 5GHz and 6GHz, Bluetooth 5.2
Antenna	2T2R design
Audio	2x 2W internal speakers
Webcam	8MP, Max Resolution: 1920x1080 30fps, with Auto Focus
MIC	Digital Microphone
TPM	TPM 2.0
Power	External 19VDC universal-type power supply brick AC input voltage: 100-240 VAC Input frequency: 50-60 Hz Maximum output power: 65W
Power Consumption	ON: 30W, SLEEP: <2.0W, OFF: <0.5W
Dimensions	Without VESA Adapter: 14.3" x 8.8" x 0.6" / 362.8 mm x 223.4 mm x 15.3 mm With VESA Adapter: 14.3" x 8.8" x 0.8" / 362.8 mm x 223.4 mm x 20.2 mm
Shipping Dimensions	18.11" x 12.64" x 7" / 460 mm x 321 mm x 178 mm
Weight	Unpacked: 3.53 lbs / 1.6 kg, Packaged: 8.81 lbs / 4 kg
Temperature	Operating: 0°C to 35°C / 32°F to 95°F, Storage: -20°C to 60°C / -4°F to 140°F
Humidity (non-condensing)	Operating: 10% to 90%; Storage: 0% to 95% (38.7°C max wet bulb temperature)
Compliance	Energy Star 8.0 certified, TAA Compliant
Regulatory approvals and declarations	UL/cUL, FCC, CE, CB, NOM, RCM, VCCI, Argentina S-Mark, CCC, SRRC, ANATEL, UKCA
Mounting Options	75mm VESA mount
Real-Time Clock	Replaceable CR2450 lithium metal battery for clock
Warranty	3-year
Extended Warranties	4 year: E819598; 5 year: E819795; 3 year + AUR: E820186; 4 year + AUR: E820388; 5 year + AUR: E820582
MTBF	50,000 hours demonstrated
What's in the box	I Series Slate, IO Hub, North America Power Cord, European Power Cord, 65W Power Adapter, Quick Installation Guide (QIG)

Ordering Information

Part Number	Processor	OS	Memory	Storage
E983895	J6426	Window 10	8GB	128GB

Learn more about Elo at [EloTouch.com](https://www.elotouch.com).

Americas

Tel +1 408 597 8000
elosales.na@elotouch.com

Europe (EMEA)

Tel +32 (0)16 70 45 00
EMEA.Sales@elotouch.com

Asia Pacific

Tel +86 (21) 3329 1385
www.elotouch.com.cn

Elo reserves the right to change or update, without notice, any information contained herein; to change, without notice, the design, construction, materials, processing or specifications of any products; and to discontinue or limit production or distribution of any products. Elo and the Elo logo are either trademarks or registered trademarks of Elo Touch Solutions, Inc. All other trademarks are the property of their respective owners.
© 2025 Elo Touch Solutions, Inc. All rights reserved. 25061AUS00178

