

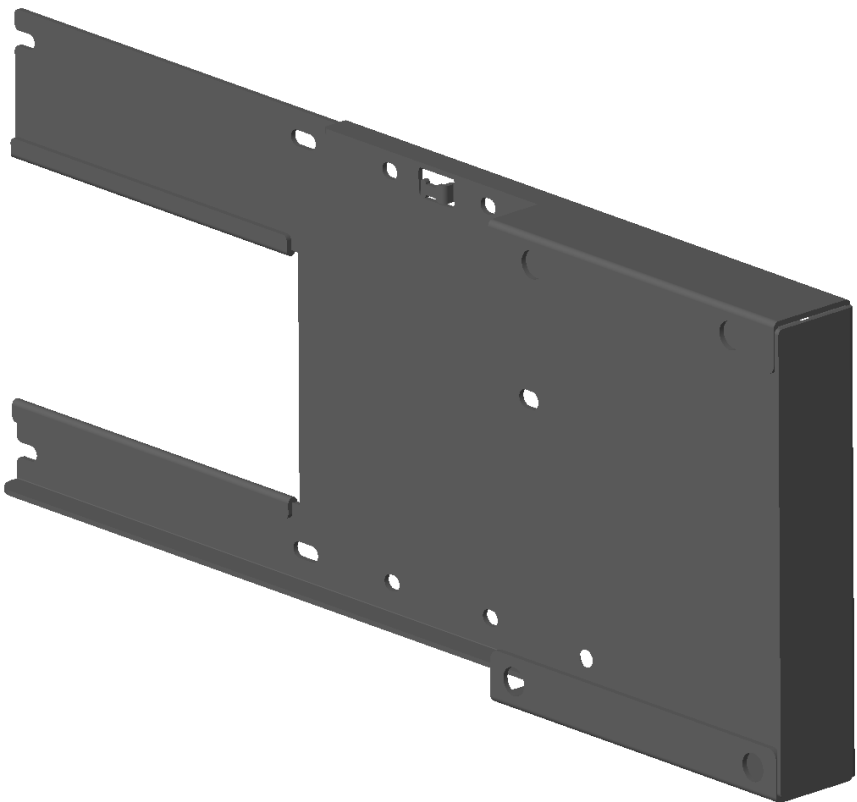
Installation Instructions

E410697 EMV-SELF-SERV-ING-LANE3000

Contents for Kit: E410697 EMV-SELF-SERV-ING-LANE3000



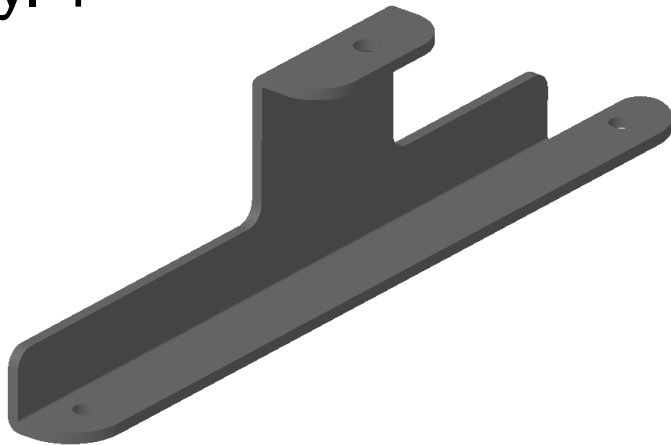
EMV ARM LANE3K
Qty. 1



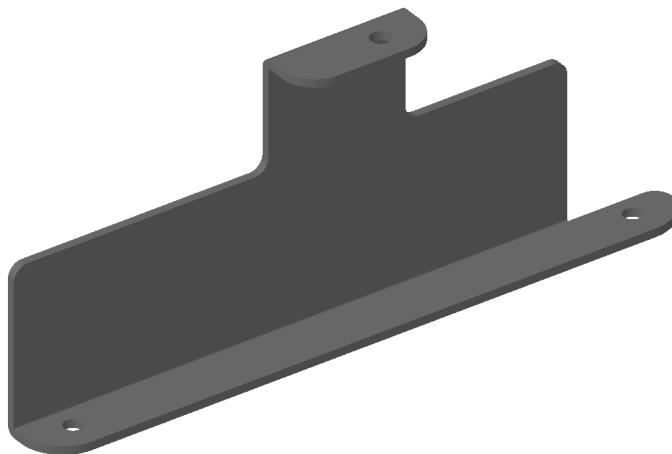
EMV SHROUD ASM LANE3K
Qty. 1



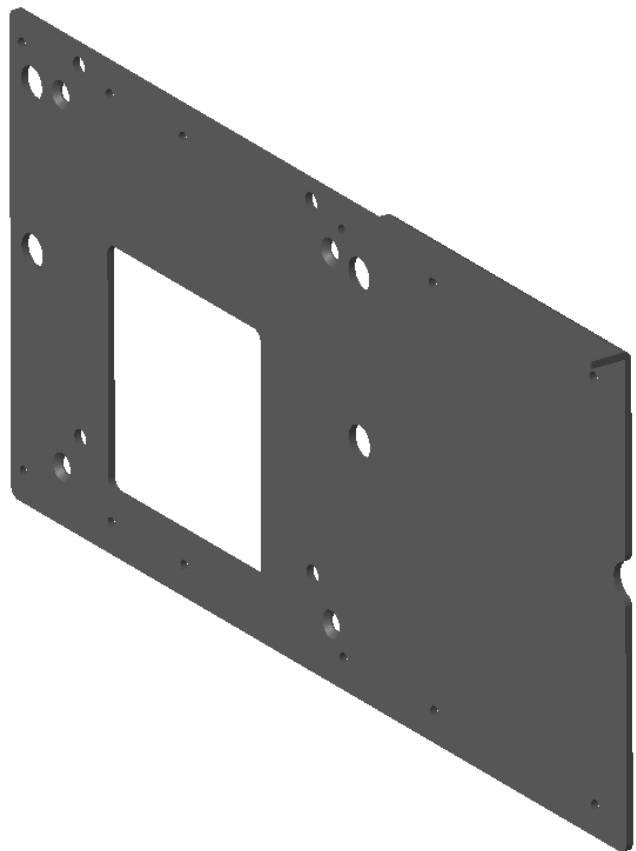
EMV Edge Bracket, 15 Android
(bag label “15 A”)
Qty. 1



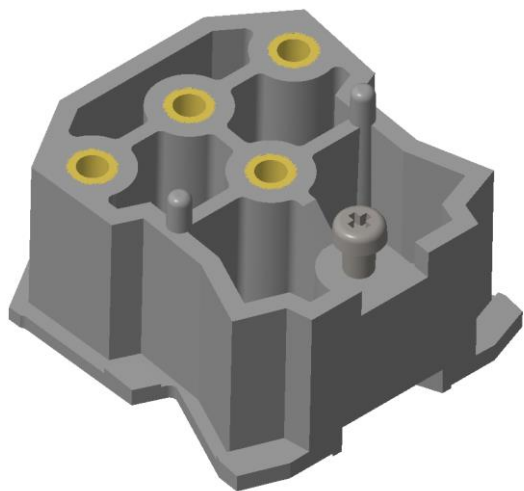
EMV Edge Bracket, 15 Windows
(bag label “15 W”)
Qty. 1



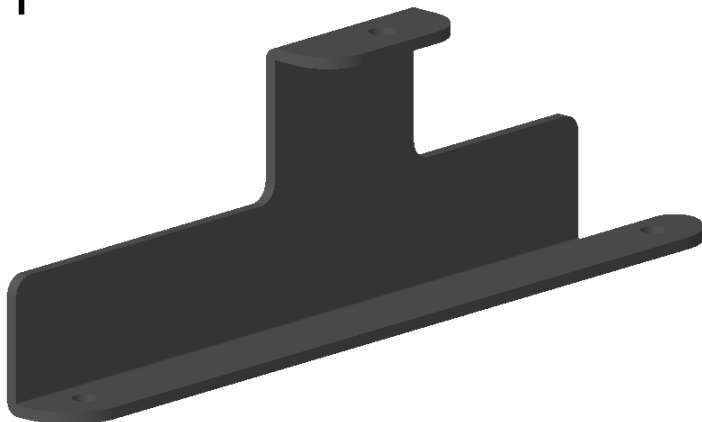
EMV Mount Plate, Long
Qty. 1



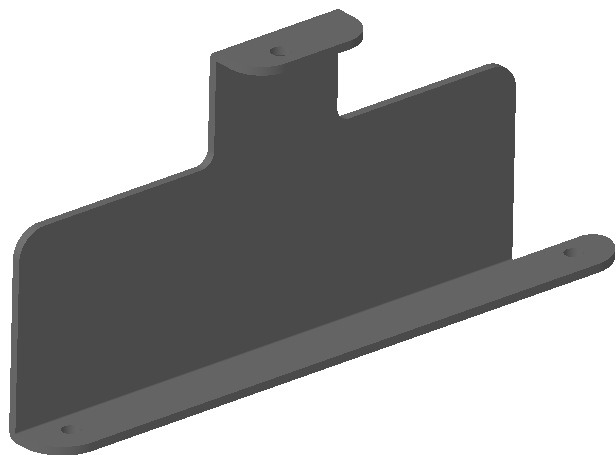
UNIVERSAL MOUNT
(Bag A)
Qty. 1



EMV Edge Bracket, 22 Android
(bag label “22 A”)
Qty. 1



EMV Edge Bracket, 22 Windows
(bag label “22 W”)
Qty. 1



Screws/Hardware		
Bag B	Qty.4	SCREW, M4X8, PAN HEAD, CROSS RECESS, ZINC PLATE
Bag C	Qty. 2	SCREW, M3X8, PAN-HEAD, CROSS-RECESS,BLACK
Bag D	Qty.2	CABLE TIE
Bag R	Qty. 4	SCREW, M4X6, FLAT HEAD, 90 DEGREE, CROSS RECESS, BLACK
Bag P	Qty. 4	SCREW, M4X5, PAN HEAD,CROSS RECESS, BLACK
Bag E	Qty. 4	SCREW, M4X6, FLAT HEAD, 120 DEGREE, CROSS RECESS, BLACK

Installation Instructions

Step 1: Locate Universal Adapter (below, left) from bag labeled A.



Step 2: Install on Lane 3000 EMV device as shown, and tighten locking screw.



Step 3: Assemble EMV cable (not included) as shown.



Installation Instructions

Step 4: Feed EMV cable through bracket as shown.



Step 5: Assemble EMV device into bracket, dressing cable as shown to avoid pinching.

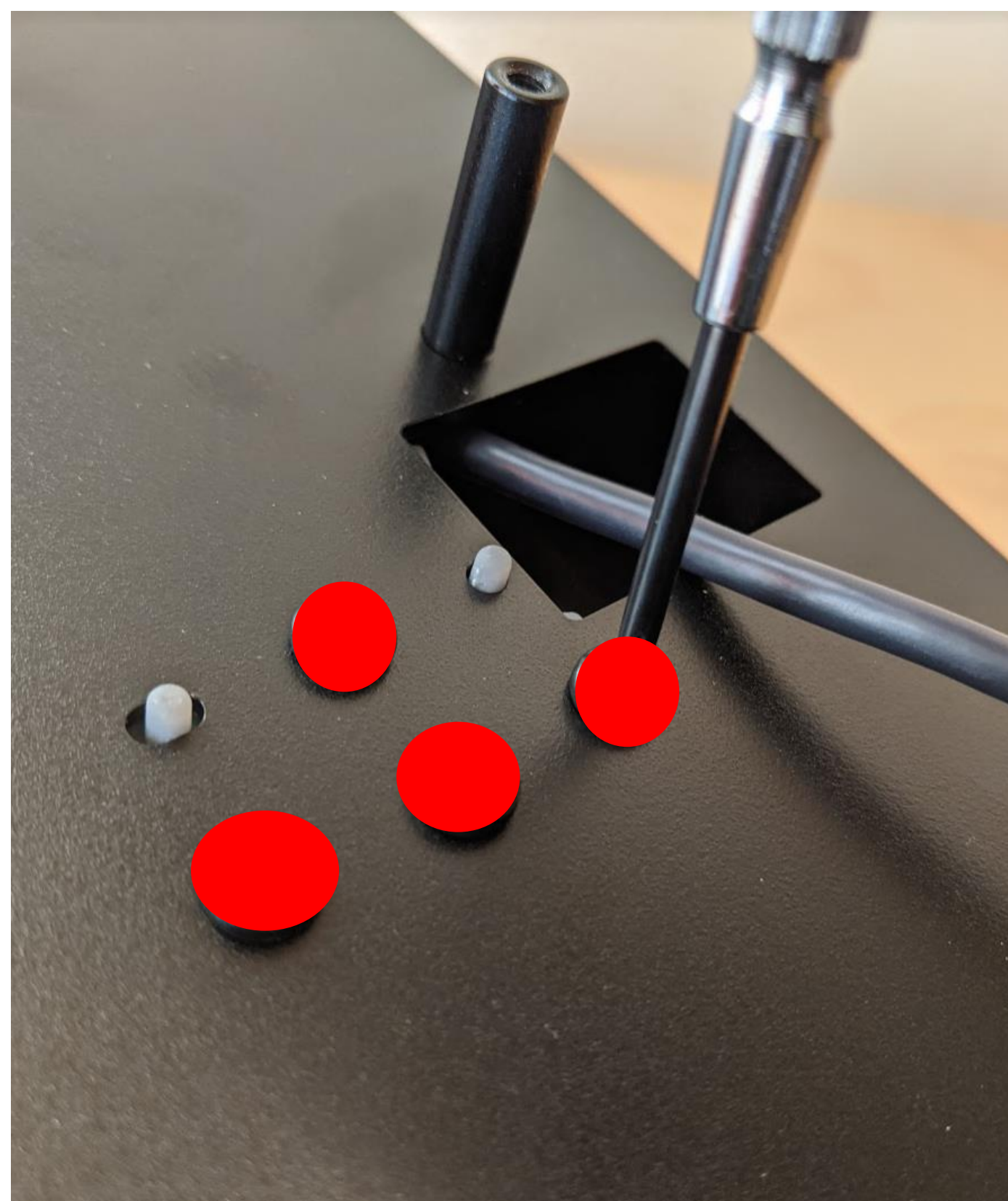


Assembled EMV device should sit flush as shown below.



Installation Instructions

Step 6: Ensure pins from Universal Adapter are engaged in holes on bracket as shown below. Locate 4 pcs M4 screws from bag B and fasten as shown below.



Step 7 : Assemble bracket to arm as shown below, taking care not to pinch cables.



Step 8: Assemble bracket to arm using 4 pcs flat head M4 screws from bag E.



Installation Instructions

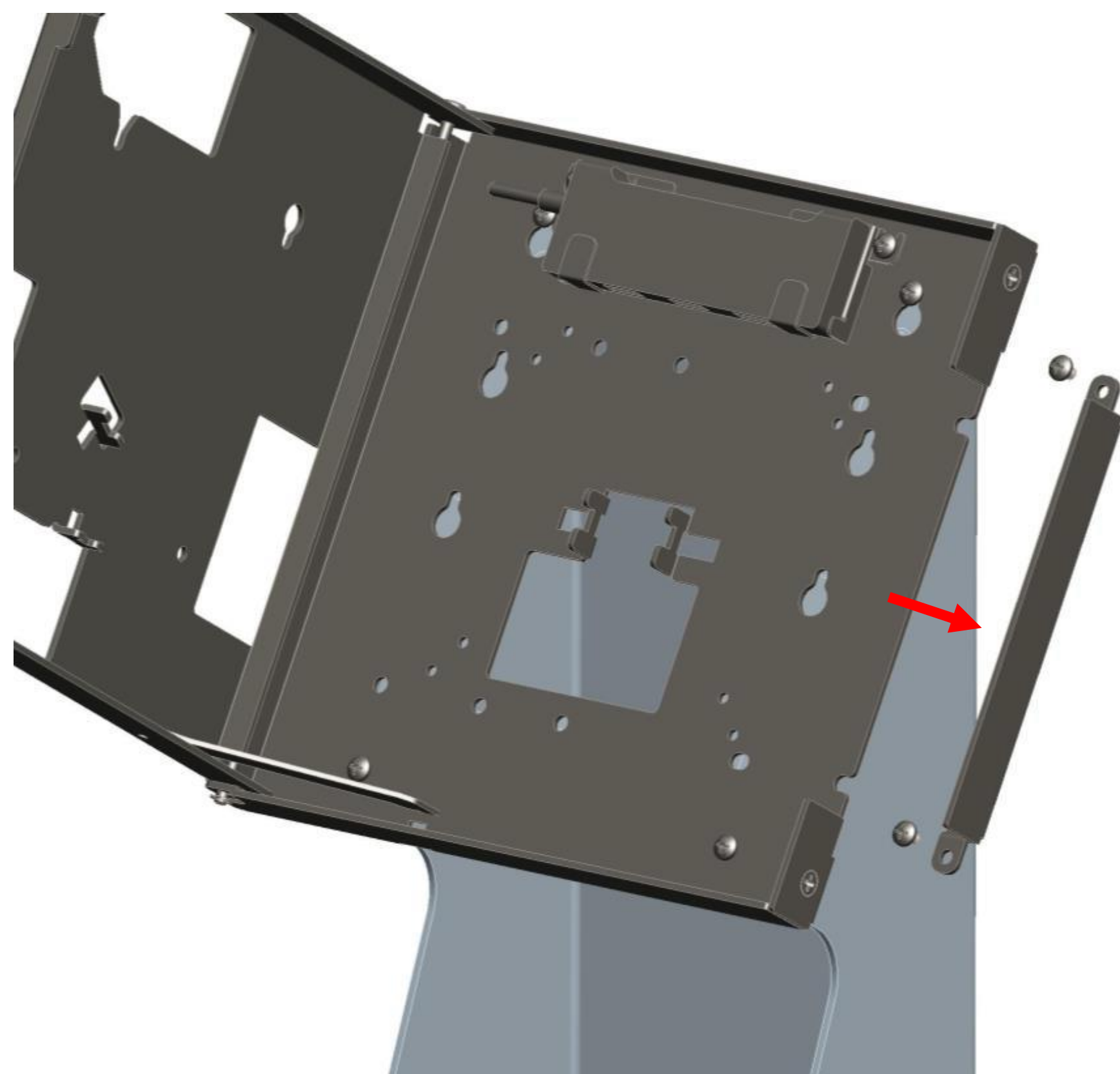
Step 9: Tie off cables to arm using cable tie from bag D.

Assembly should appear as below.

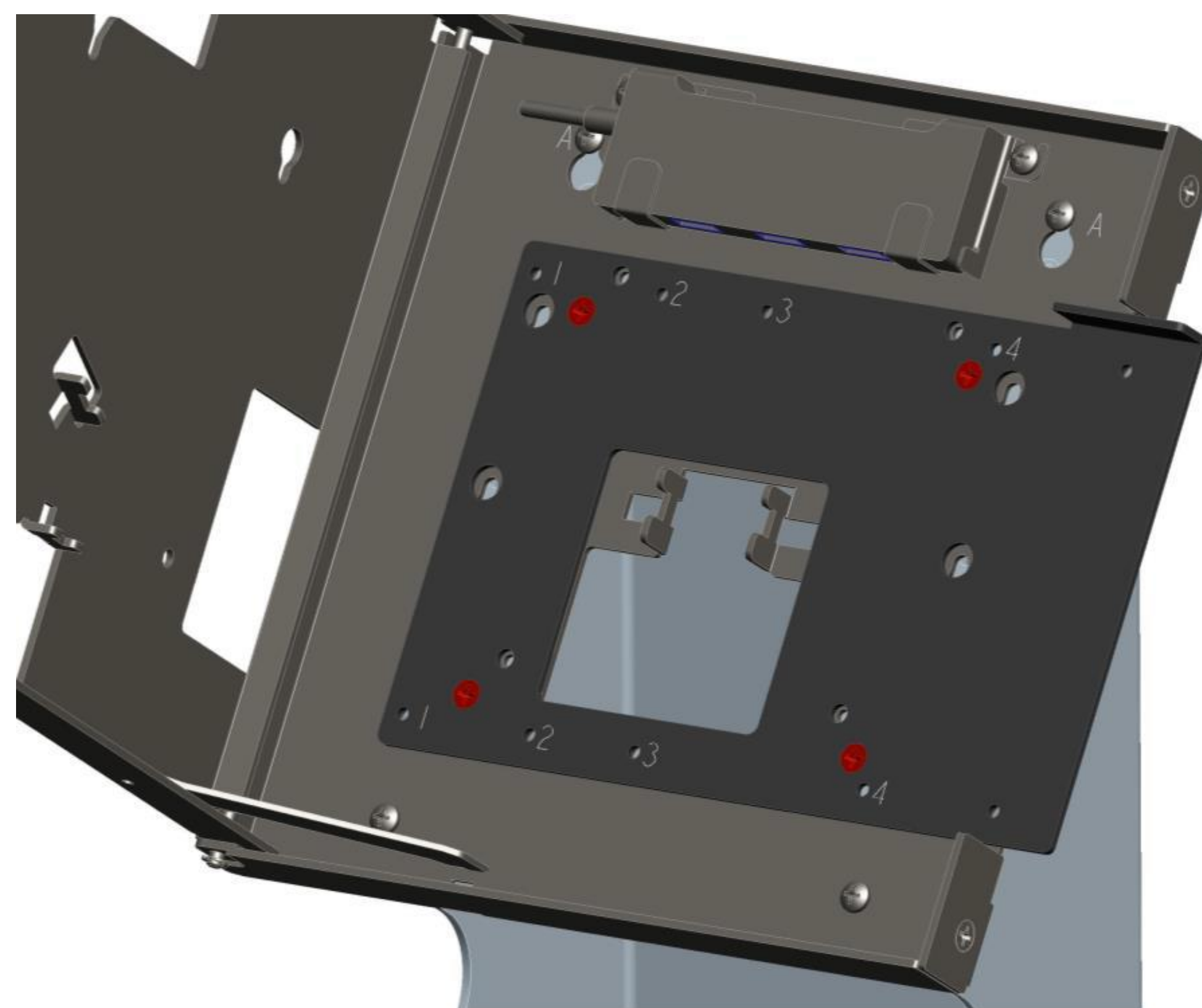


Installation Instructions

Step 10: Remove Fill Plate on Display Bracket.



Step 11: Add the EMV Mount Plate to the Display Bracket using (4) screws from bag "R".



Installation Instructions

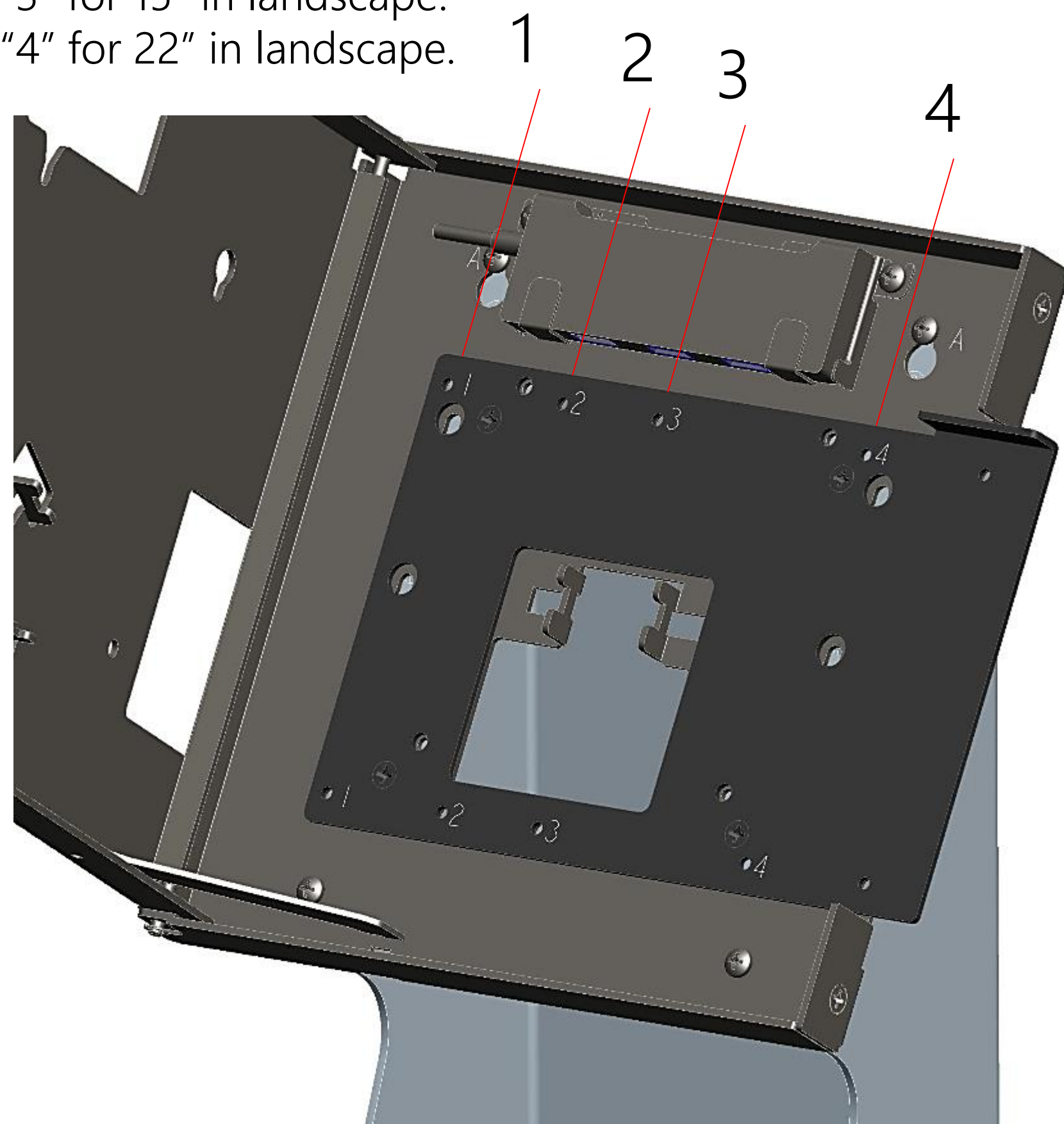
Step 12: Add (2) screws to EMV Mount Plate from bag "P" at position 1, 2, 3 or 4. Leave ~3mm (1/8") gap (for EMV Arm).

Position "1" for 15" in portrait.

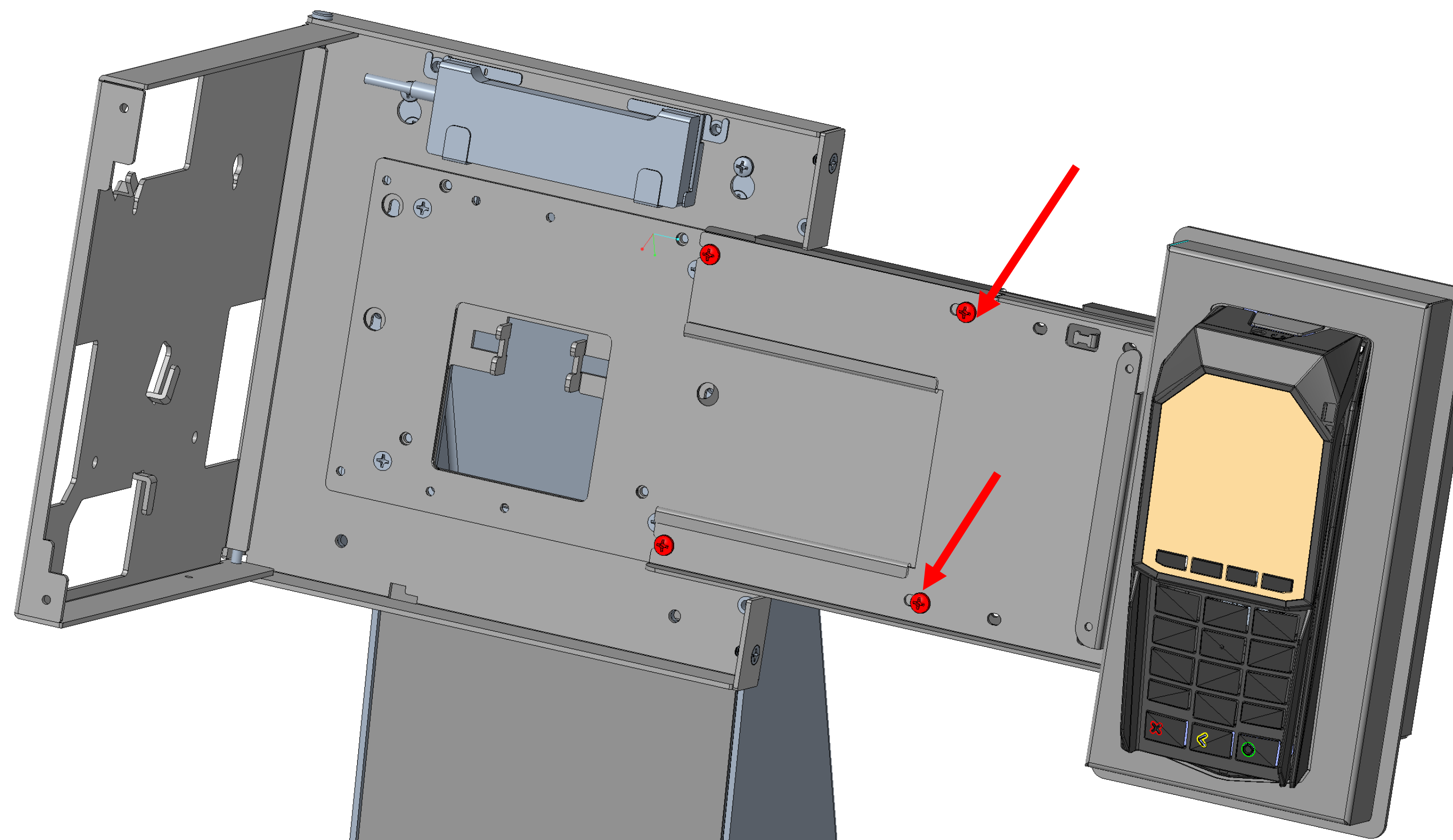
Position "2" for 22" in portrait.

Position "3" for 15" in landscape.

Position "4" for 22" in landscape.



Step 13: Assemble EMV Arm to Display Bracket. Add (2) screws from bag "P" at right most position "A" to secure EMV Arm to Display Bracket.



Installation Instructions

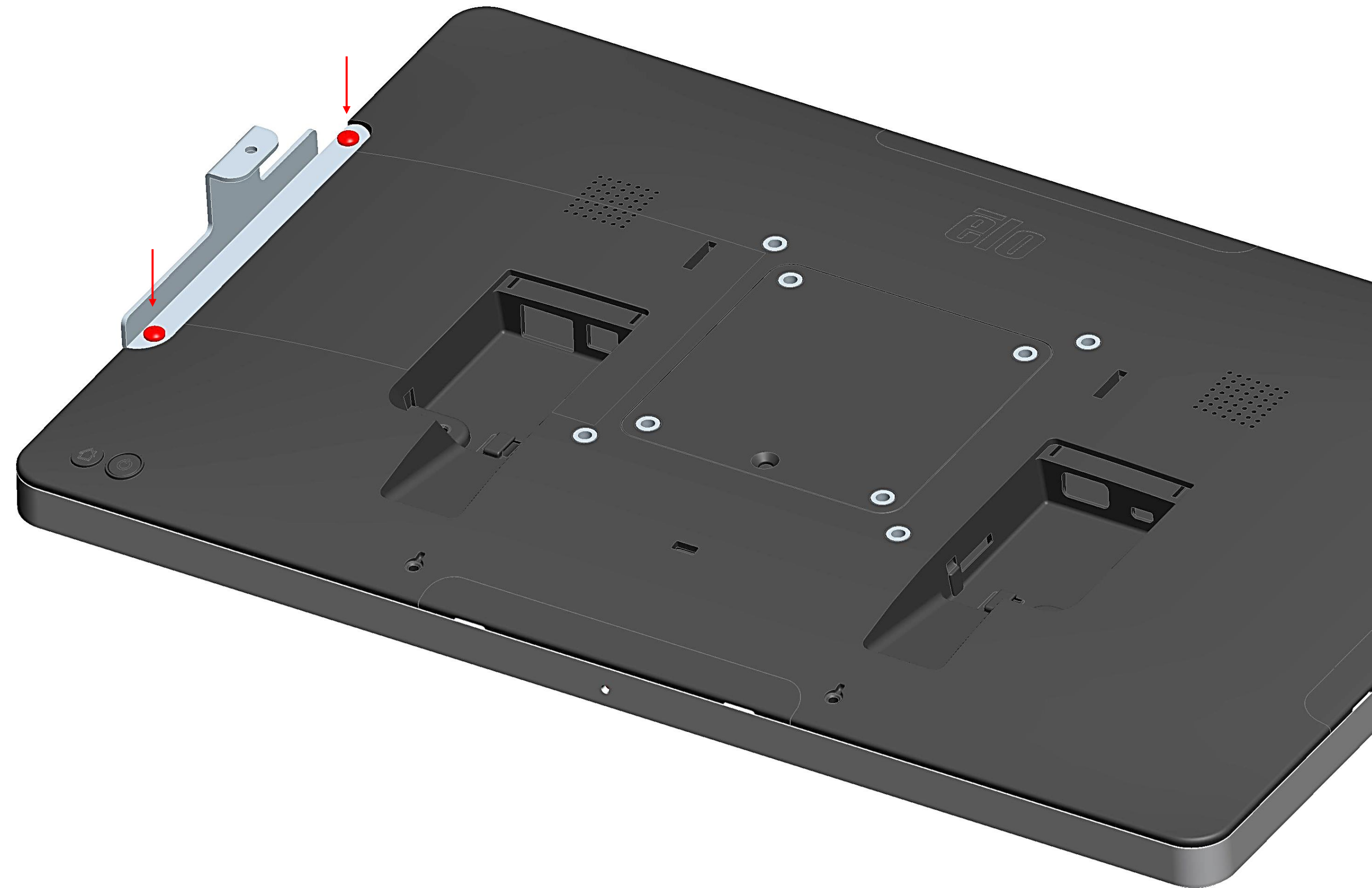
Step 14: Remove plastic cover from right edge of display. Add Edge Bracket using (2) screws from bag "C".

Use Edge Bracket "15 A" for Android 15"

Use Edge Bracket "22 A" for Android 22"

Use Edge Bracket "15 W" for Windows 15"

Use Edge Bracket "22 W" for Windows 22"



Return to Wallaby assembly guide to complete installation