

## Quick Installation Guide

### Status Light Kit

#### Elo Technical Support

Online self-help: [www.elotouch.com/support](http://www.elotouch.com/support)

#### America

800-ELO-TOUCH  
Tel +1 408 597 8000  
[EloSales.NA@elotouch.com](mailto:EloSales.NA@elotouch.com)

#### Asia-Pacific

Tel +86 (21) 3329 1385  
[EloAsia@elotouch.com](mailto:EloAsia@elotouch.com)

#### Europe(EMEA)

Tel +32 (0)16 930 136  
[EMEA.Sales@elotouch.com](mailto:EMEA.Sales@elotouch.com)

The information in this document is subject to change without notice. Elo Touch Solutions, Inc. and its Affiliates (collectively "Elo") makes no representations or warranties with respect to the contents herein, and specifically disclaims any implied warranties of merchantability or fitness for a particular purpose. Elo reserves the right to revise this publication and to make changes from time to time in the content hereof without obligation of Elo to notify any person of such revisions or changes.

No part of this publication may be reproduced, transmitted, transcribed, stored in a retrieval system, or translated into any language or computer language, in any form or by any means, including, but not limited to, electronic, magnetic, optical, chemical, manual, or otherwise without prior written permission of Elo Touch Solutions, Inc.

Elo and the Elo logo are either trademarks or registered trademarks of Elo Touch Solutions, Inc.

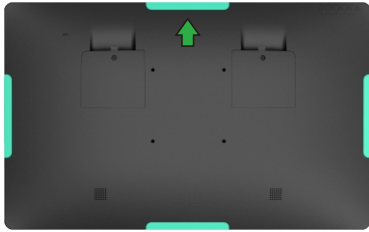
Revision C  
P/N E758615



## Installation

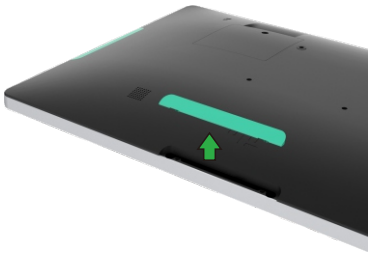
Please go to [www.elotouch.com/support](http://www.elotouch.com/support) to verify you have the latest drivers before installing this device.

1



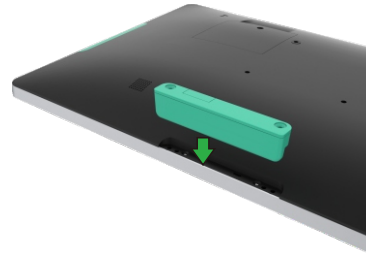
Select location to mount the status light kit  
Elo recommends the left/right location in either portrait or landscape orientation

2



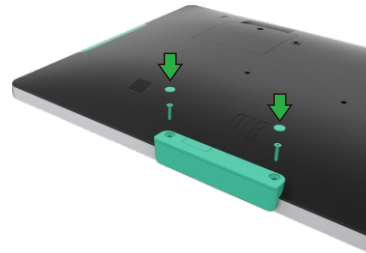
Remove the selected peripheral cover from the touchmonitor

3



Gently insert the status light kit into the peripheral bay taking care to ensure the connector mates properly

4



Install the 2 flat head screws included with the kit and cover the screws with the adhesive mylar covers if desired