



## Quick Installation Guide

# LCM Demo Kit

### Elo Touch Solutions Technical Support

Online self-help: [www.elotouch.com/support](http://www.elotouch.com/support)

Revision C  
P/N E527497

### America

800-ELO-TOUCH  
Tel +1 408 597 8000  
[EloSales.NA@elotouch.com](mailto:EloSales.NA@elotouch.com)

### Asia-Pacific

Tel +86 (21) 3329 1385  
[EloAsia@elotouch.com](mailto:EloAsia@elotouch.com)

### Europe(EMEA)

Tel +32 16 930 136  
[EMEA.Sales@elotouch.com](mailto:EMEA.Sales@elotouch.com)

The information in this document is subject to change without notice. Elo Touch Solutions, Inc. and its Affiliates (collectively “Elo”) makes no representations or warranties with respect to the contents herein, and specifically disclaims any implied warranties of merchantability or fitness for a particular purpose. Elo reserves the right to revise this publication and to make changes from time to time in the content hereof without obligation of Elo to notify any person of such revisions or changes.

No part of this publication may be reproduced, transmitted, transcribed, stored in a retrieval system, or translated into any language or computer language, in any form or by any means, including, but not limited to, electronic, magnetic, optical, chemical, manual, or otherwise without prior written permission of Elo Touch Solutions, Inc.

Elo and the Elo logo are either trademarks or registered trademarks of Elo Touch Solutions, Inc.

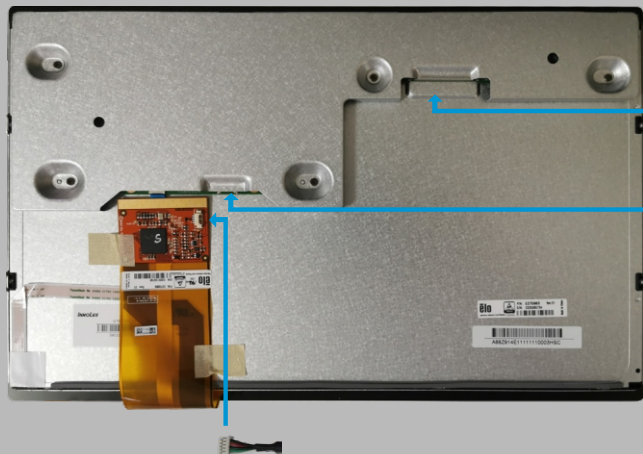




Frontside of LCM module

Touch USB Adapter Cable

Backside of LCM module



Most major OS supported  
No special drivers needed

USB

HDMI



PC terminal



Power Brick

AC Cable

HDMI Cable

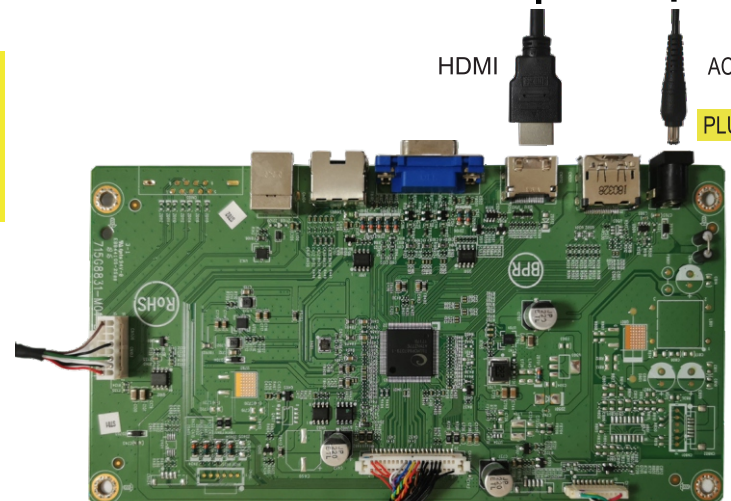
ATTENTION



HDMI

AC

PLUG IN LAST



LVDS Cable

Video Board

Backlight Cable