

Contents:

- DS11 Docking Station
- M60S/M60SC Holder
- HS11 Hand Strap
- Key * 2
- Tie-wrap * 1



Quick Installation Guide

Elo M60 Docking Station (DS11)

Revision A
P/N E733388

Elo Technical Support

Online self-help: www.elotouch.com/support

America

800-ELO-TOUCH
Tel +1 408 597 8000
elosales.na@elotouch.com

Europe (EMEA)

Tel +32 (0)16 70 45 00
emea.sales@elotouch.com

Asia Pacific

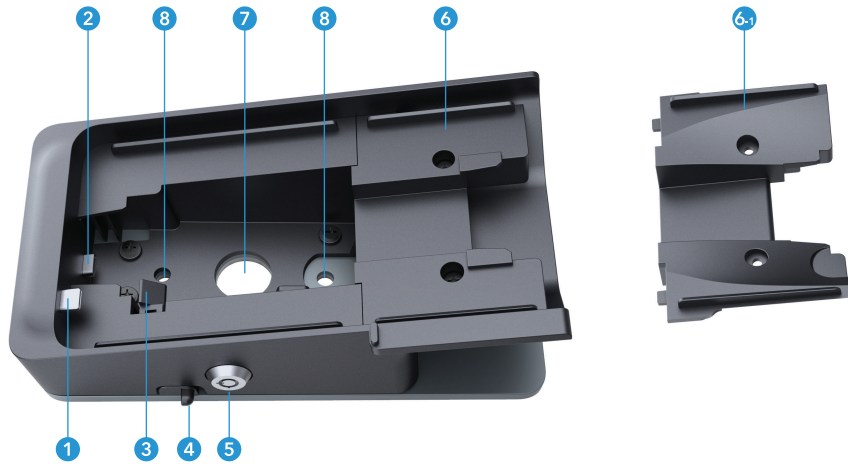
Tel +86 (21) 3329 1385
www.elotouch.com.cn

The information in this document is subject to change without notice. Elo Touch Solutions, Inc. and its Affiliates (collectively "Elo") makes no representations or warranties with respect to the contents herein, and specifically disclaims any implied warranties of merchantability or fitness for a particular purpose. Elo reserves the right to revise this publication and to make changes from time to time in the content hereof without obligation of Elo to notify any person of such revisions or changes.

No part of this publication may be reproduced, transmitted, transcribed, stored in a retrieval system, or translated into any language or computer language, in any form or by any means, including, but not limited to, electronic, magnetic, optical, chemical, manual, or otherwise without prior written permission of Elo Touch Solutions, Inc.

Elo and the Elo logo are either trademarks or registered trademarks of Elo Touch Solutions, Inc..





- 1 USB-C for Connecting to M60
- 2 USB-C for Power/Charging
- 3 Latch
- 4 Release Slide

- 5 Lock
- 6 M60/M60C Holder
- 6.1 M60S/M60SC Holder
- 7 Cable Routing Hole
- 8 Table-mounting Hole

Docking Station Installation

Note: Before installing the docking station, make sure the M60 hand strap has been installed to M60 device. (Please refer to M60 hand strap quick installation guide - P/N E733176)

1. Connect to the power adapter with the USB-C cable. Fasten the cable to the docking station with tie-wrap. (Power adapter and USB-C cable are included with M60 device)



2. Unlock the docking station before installing the M60.
3. Ensure the M60 properly connects with USB-C on the docking station. Use the key to lock the device.

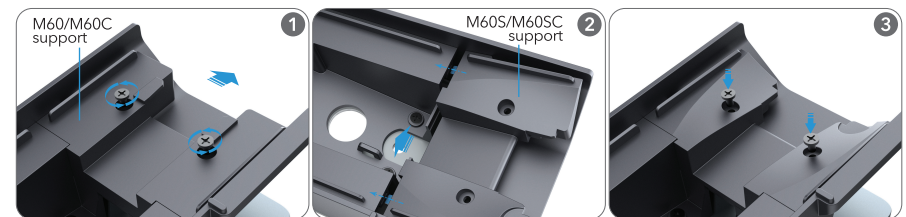


M60 Removal from the Docking Station

- Unlock the docking station.
- Push the release slide, and slide the M60 out from the docking station.

How to Replace the Holder of M60S/M60SC

1. Remove the screws, and remove the M60/M60C holder.
2. Assemble the M60S/M60SC holder by aligning the pin and hole.
3. Tighten the two screws.



* The equipment power supply cord shall be connected to a socket-outlet with earthing connection.