

Contents:

- 1 x VESA Mount
- 3 x Pan Head screws : M3xL4.1
- 4 x Pan Head screws : M4xL5.8



Quick Installation Guide

ELO Pay 7" VESA Mount

Learn more about Elo at EloTouch.com

America

Tel +1 408 597 8000
EloSales.NA@elotouch.com

Europe (EMEA)

Tel +32 16 930 136
EMEA.sales@elotouch.com

Asia Pacific

Tel +86 (21) 3329 1385
EloAsia@elotouch.com

Revision B
P/N E706397

The information in this document is subject to change without notice. Elo Touch Solutions, Inc. and its Affiliates (collectively "Elo") makes no representations or warranties with respect to the contents herein, and specifically disclaims any implied warranties of merchantability or fitness for a particular purpose. Elo reserves the right to revise this publication and to make changes from time to time in the content hereof without obligation of Elo to notify any person of such revisions or changes.

No part of this publication may be reproduced, transmitted, transcribed, stored in a retrieval system, or translated into any language or computer language, in any form or by any means, including, but not limited to, electronic, magnetic, optical, chemical, manual, or otherwise without prior written permission of Elo Touch Solutions, Inc.

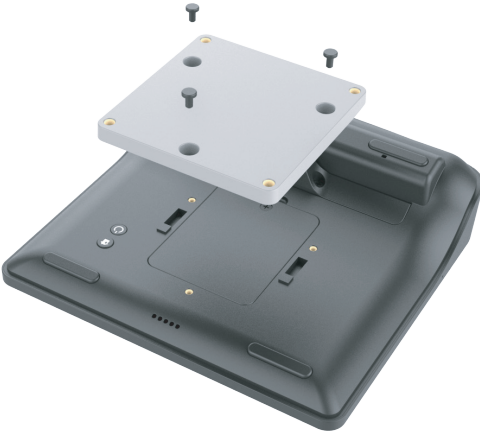
Elo and the Elo logo are either trademarks or registered trademarks of Elo Touch Solutions, Inc.

© 2022 Elo Touch Solutions, Inc. All rights reserved.



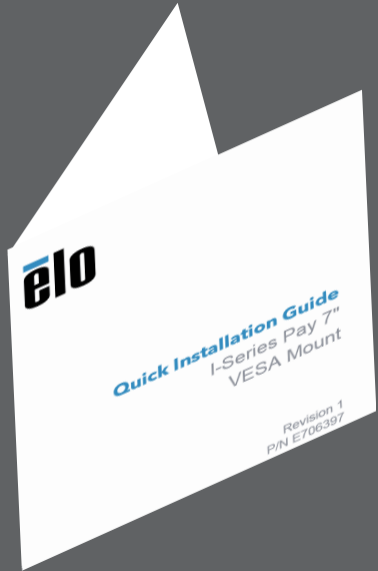
www.elotouch.com

Attach VESA Mount using (3) screws M3X4.1mm long



Attach Pay 7" with VESA Mount to VESA stand and mount using (4) provided screws M4 X 5.8mm long





材质：105g双铜纸过油
尺寸：80*80 ±1mm
折叠方式：对折再对折