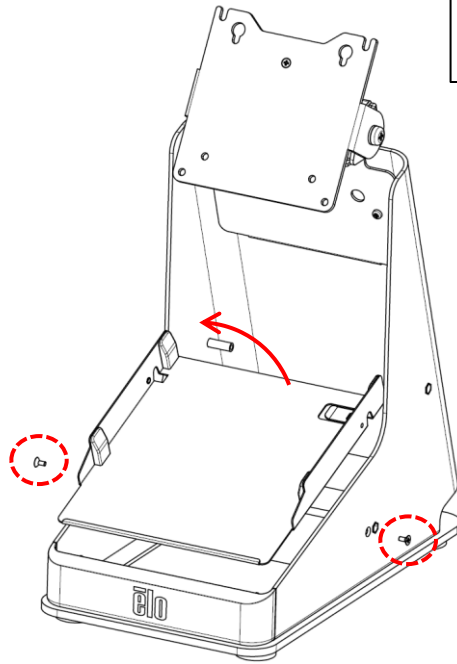
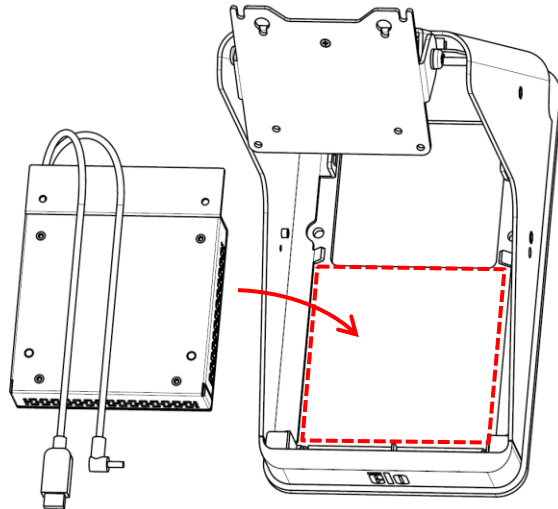


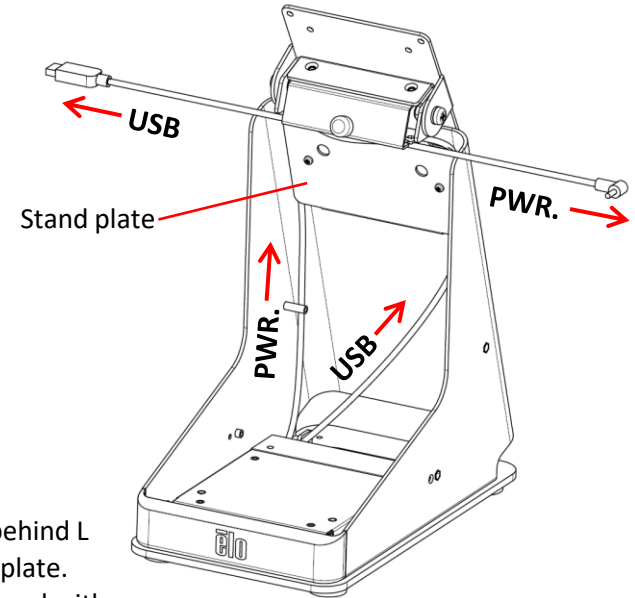
**INSTALLATION INSTRUCTIONS:  
E353758 / E949536 mPOS PRINTER STAND WITH  
EXPANSION MODULE FOR ANDROID**



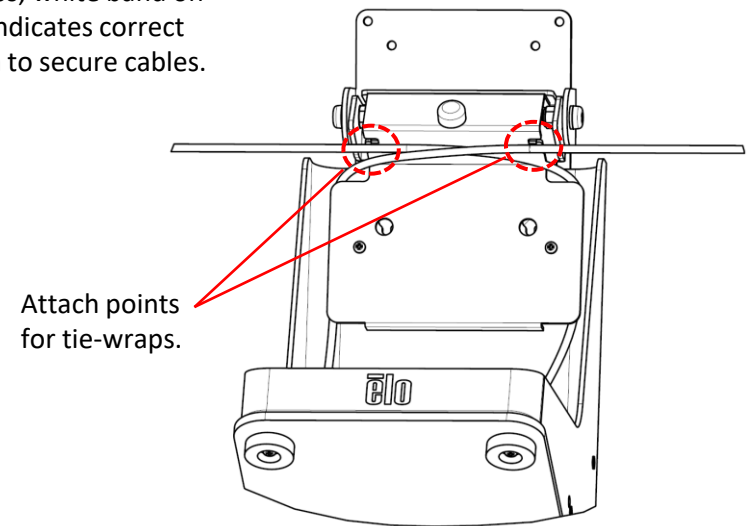
**1-** Remove (2) screws (L & R side) and pull-out printer tray. Keep screws for re-assembly.



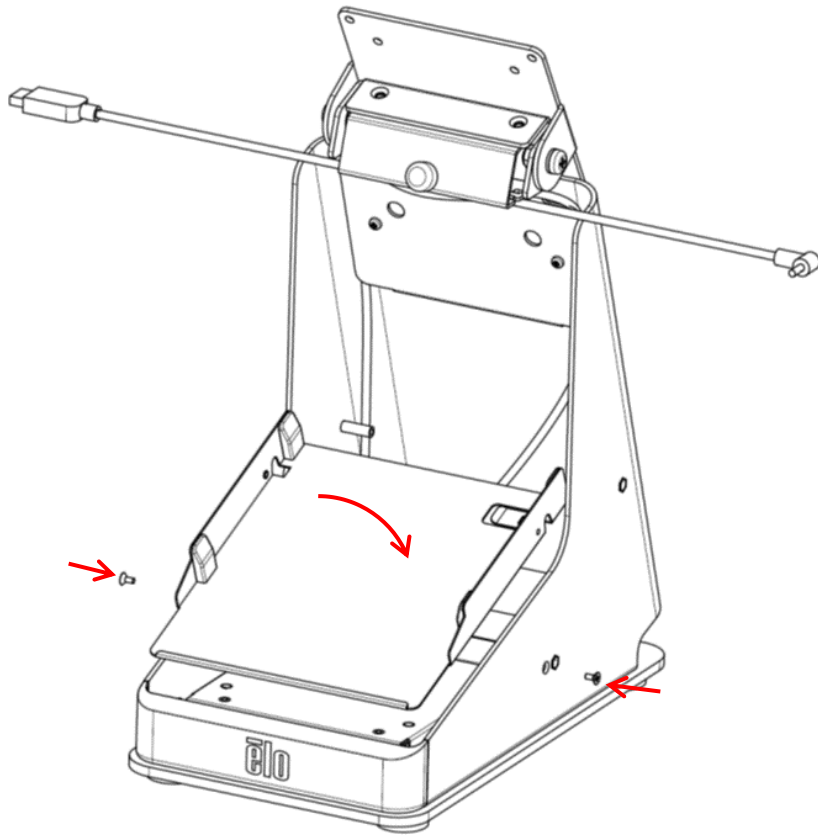
**2-** Place Expansion Module into base.



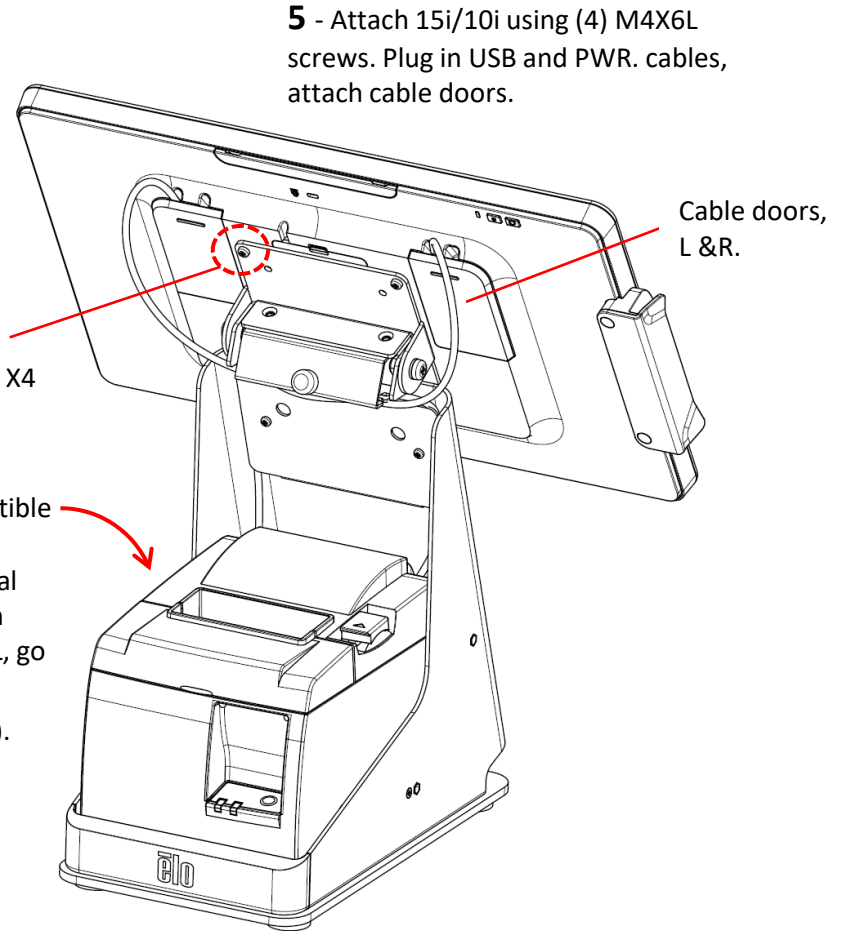
**3** – Route cables behind L & R sides of stand plate. Secure cables to stand with tie-wraps; white band on cables indicates correct location to secure cables.



**INSTALLATION INSTRUCTIONS:  
E353758 / E949536 mPOS PRINTER STAND WITH  
EXPANSION MODULE FOR ANDROID**



**4** - Re-assemble printer tray using (2) screws, L & R side.



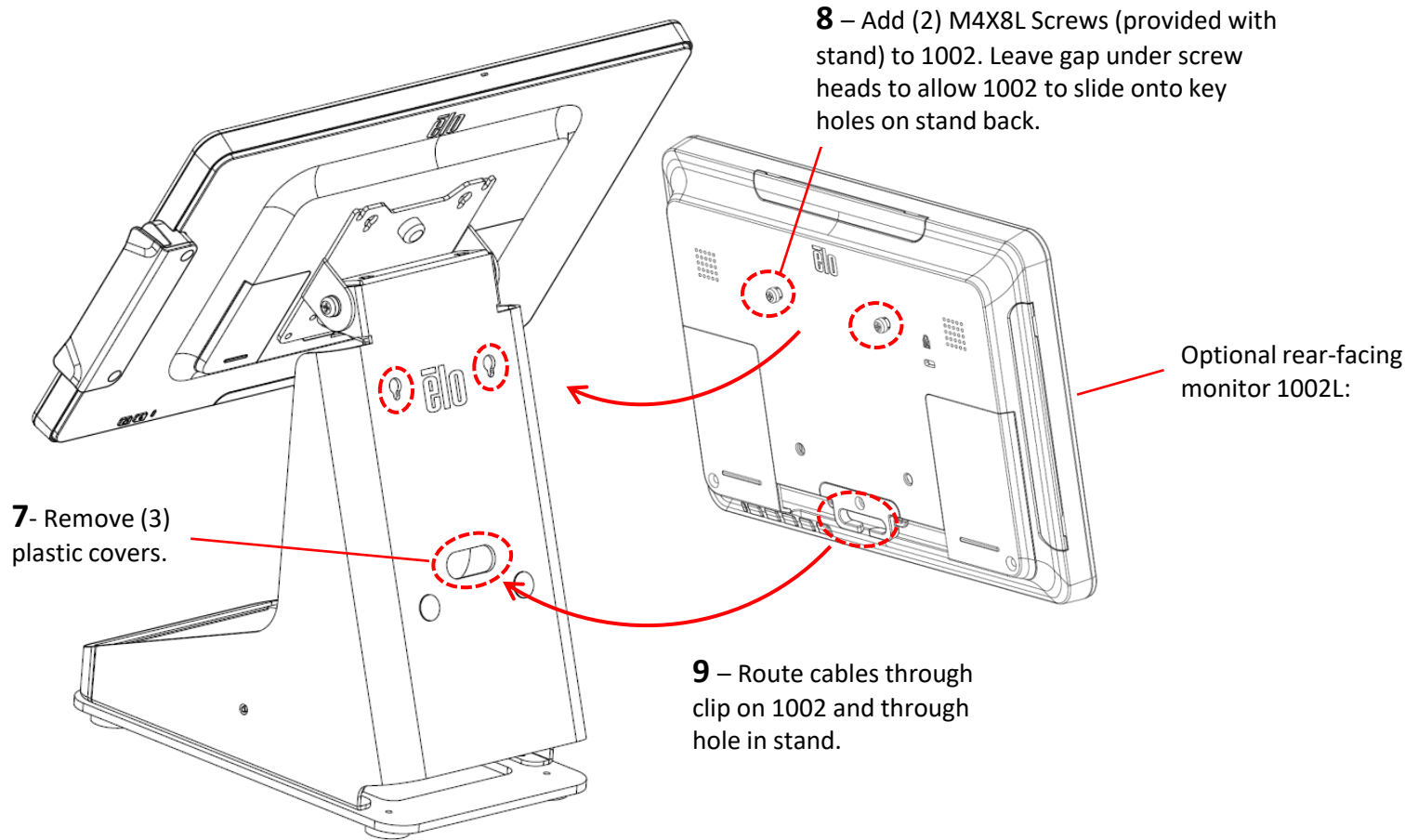
**5** - Attach 15i/10i using (4) M4X6L screws. Plug in USB and PWR. cables, attach cable doors.

M4X6L  
Screws, X4

Cable doors,  
L & R.

**6** - Insert compatible printer.  
(If adding optional rear-facing touch monitor ET1002L, go to step **7** before installing printer).

**INSTALLATION INSTRUCTIONS:  
E353758 / E949536 mPOS PRINTER STAND WITH  
EXPANSION MODULE FOR ANDROID**



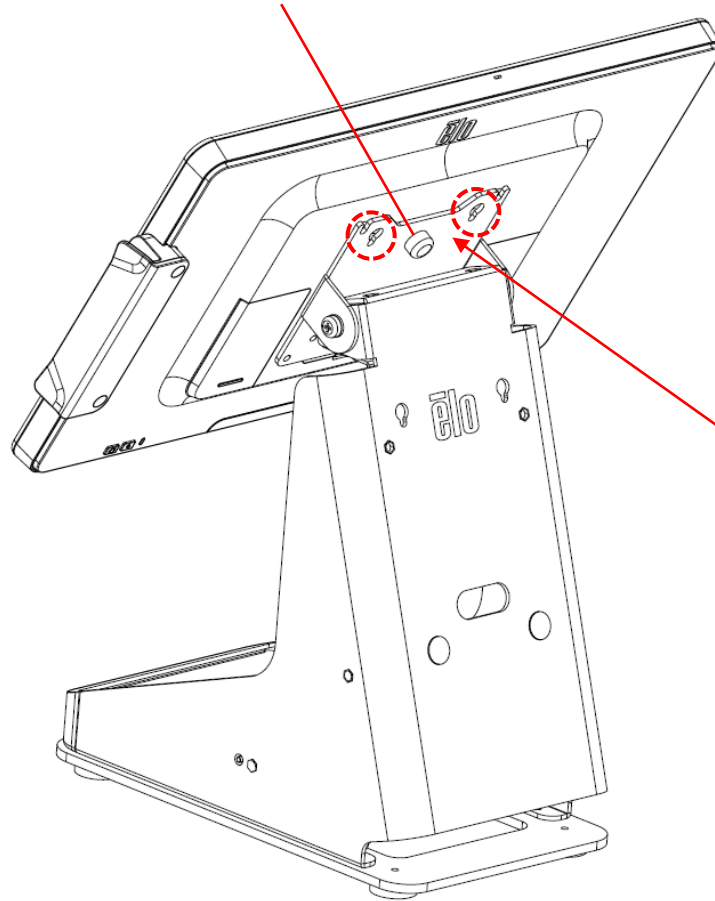
**INSTALLATION INSTRUCTIONS:  
E353758 / E949536 mPOS PRINTER STAND WITH  
EXPANSION MODULE FOR ANDROID**



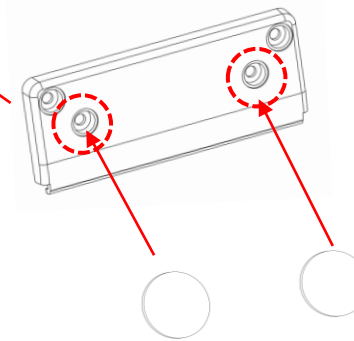
**VESA Plate Cover Assembly for E949536 (Optional)**

**NOTE** –VESA Plate Cover is optional for the assembly, it will not affect the function and performance.

**1** – Remove the rubber before assembling the cover.



**2** – Use (2) M4x8 screws to attach the cover to the VESA plate.



**3** – Remove the protective film from the included mylar covers and place the covers over the screws.