

Included items:

- Elo Conference Camera
- Two M3 thumb screws
- 2.5mm barrel jack cable



Quick Installation Guide

Elo Conference Camera

Elo Touch Solutions Technical Support  
Online self-help: [www.elotouch.com/support](http://www.elotouch.com/support)

Revision B  
P/N E211626

**North America**  
800-ELO-TOUCH  
Tel +1 408 597 8000  
Fax +1 408 597 8050  
[EloSales.NA@elotouch.com](mailto:EloSales.NA@elotouch.com)

**Asia-Pacific**  
Tel +86 (21) 3329 1385  
Fax +86 (21) 3329 1400  
[EloAsia@elotouch.com](mailto:EloAsia@elotouch.com)

**Europe**  
Tel +32 (0)16 70 45 00  
Fax +32 (0)16 70 45 49  
[elosales@elotouch.com](mailto:elosales@elotouch.com)

**Latin America**  
Tel +52 55 2281-6958  
[EloSales.LATAM@elotouch.com](mailto:EloSales.LATAM@elotouch.com)

The information in this document is subject to change without notice. Elo Touch Solutions, Inc. and its Affiliates (collectively “Elo”) makes no representations or warranties with respect to the contents herein, and specifically disclaims any implied warranties of merchantability or fitness for a particular purpose. Elo reserves the right to revise this publication and to make changes from time to time in the content hereof without obligation of Elo to notify any person of such revisions or changes.

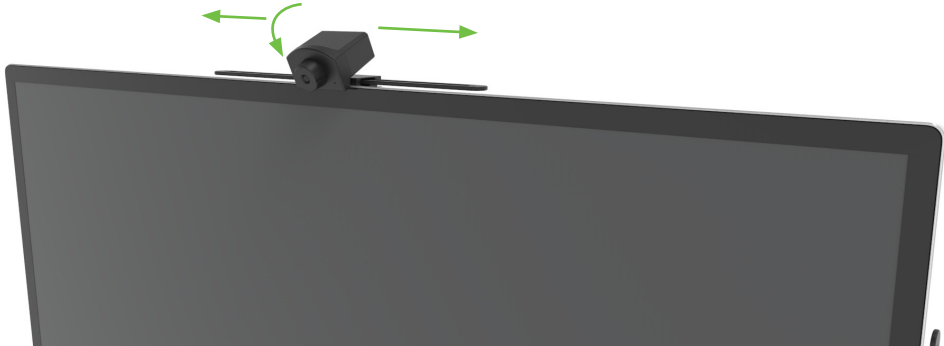
No part of this publication may be reproduced, transmitted, transcribed, stored in a retrieval system, or translated into any language or computer language, in any form or by any means, including, but not limited to, electronic, magnetic, optical, chemical, manual, or otherwise without prior written permission of Elo Touch Solutions, Inc.

Elo and the Elo logo are either trademarks or registered trademarks of Elo Touch Solutions, Inc.

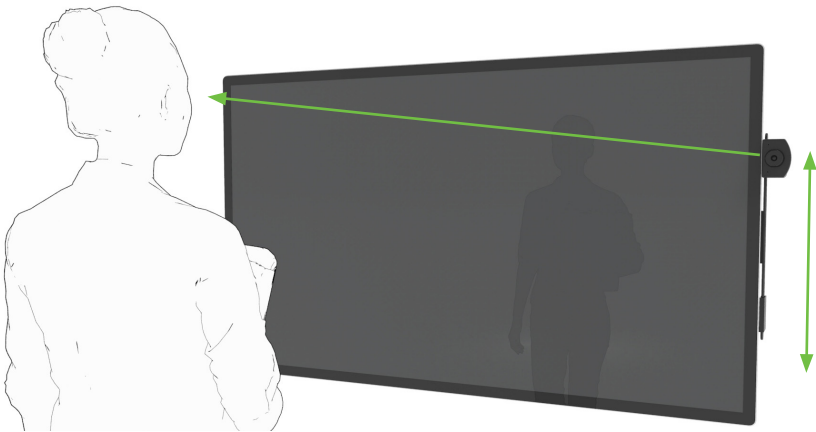


**Installation Options:** The Elo Conference Camera is configurable for different styles of conferencing by mounting it to any side of the Elo IDS display.

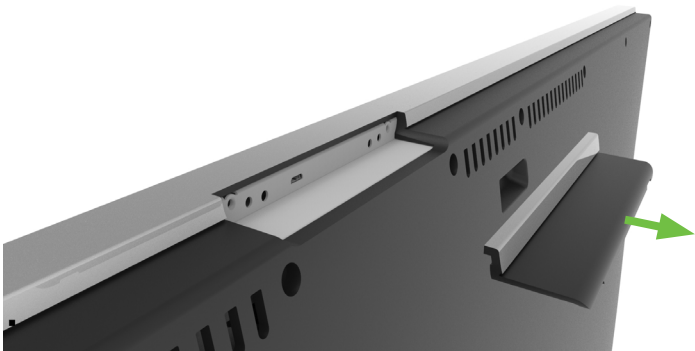
**Option 1:** Choose the top location for large and wide meeting rooms or where participants are standing up or are far away from the camera. After installation, users can slide the camera left or right and tilt it downward for the desired viewing area.



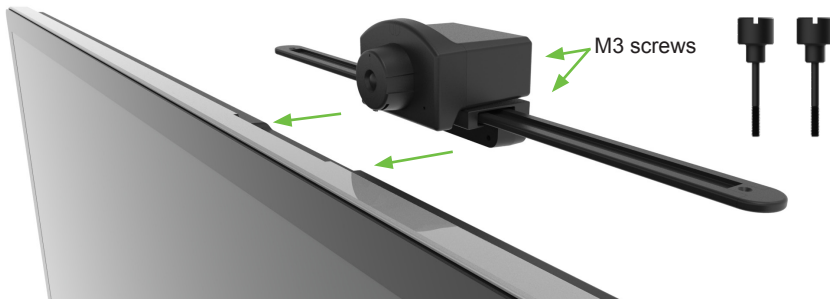
**Option 2:** Choose the left or right side location for smaller or narrow meeting rooms or where participants are located close to the camera. After installation, users can slide the position up or down and tilt toward the center of the IDS Display to center the camera viewing area at eye level allowing for a more face to face conferencing experience.



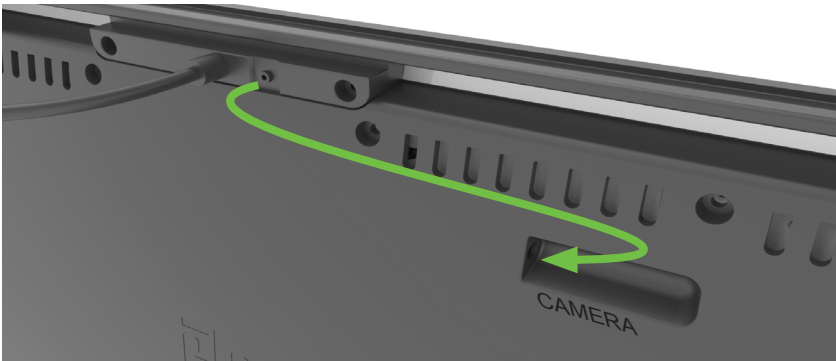
**Step 1.** Remove the Elo Edge Connect™ cover from the chosen installation option #1 or #2.



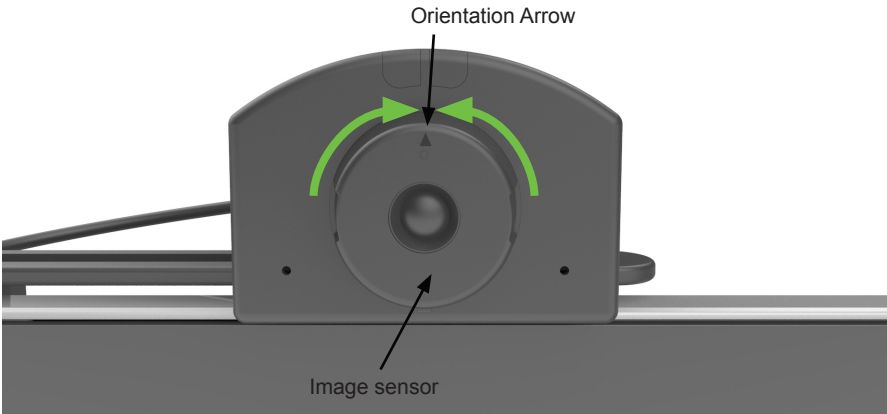
**Step 2.** Plug the conference camera into the Elo Edge Connect™ dock ensuring the USB connector on the camera aligns with the matching connector on the IDS display. Install the two M3 mounting screws to secure the camera to the IDS display.



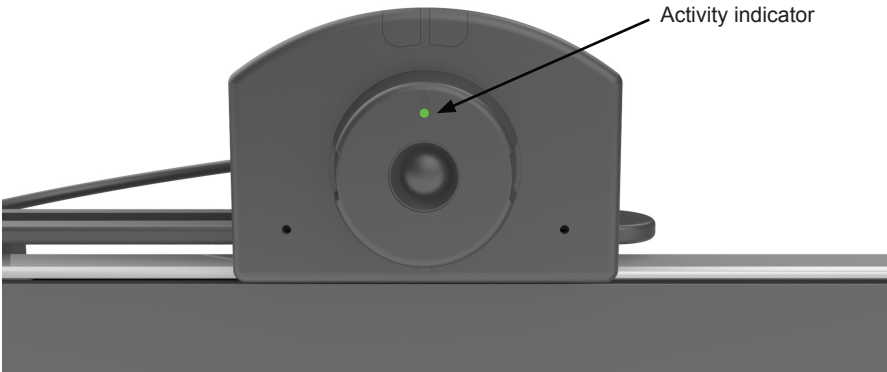
**Step 3.** Connect the included 2.5mm barrel jack cable between the camera and the nearest connection labeled “CAMERA” on the back of the IDS display.



**Step 4.** If the camera is mounted using Option 2, rotate the image sensor clockwise or counter-clockwise so the orientation arrow points in the upward direction to ensure the image is rotated correctly during use.



**Step 5.** Start your conferencing software and enable the camera. The green activity indicator will illuminate any time the webcam is in use.



Go to [www.elotouch.com/support](http://www.elotouch.com/support) to download the detailed user manual