

Quick Installation Guide

Android Computer Module for Elo Interactive Digital Signage (IDS) Monitors

Elo Touch Solutions Technical Support

Online self-help: www.elotouch.com/go/websupport

Technical Support contacts in your region:

www.elotouch.com/go/contactsupport

North America

Elo Touch Solutions
1033 McCarthy Boulevard
Milpitas, CA 95035

800-ELO-TOUCH
Tel +1 408 597 8000
Fax +1 408 597 8050
customerservice@elotouch.com

Europe

Tel +32 (0)16 70 45 00
Fax +32 (0)16 70 45 49
elosales@elotouch.com

Asia-Pacific

Tel +86 (21) 3329 1385
Fax +86 (21) 3329 1400
www.elotouch.com.cn

Latin America

Tel 786-923-0251
Fax 305-931-0124
www.elotouch.com

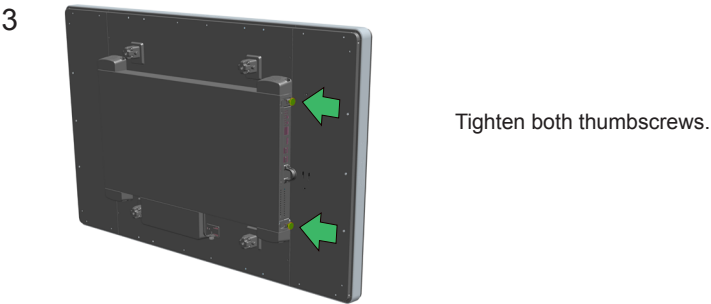
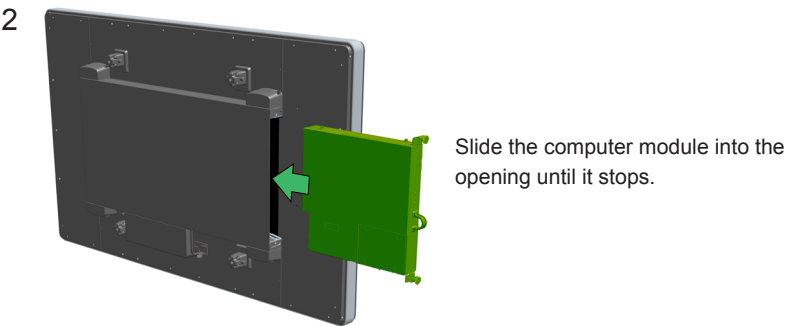
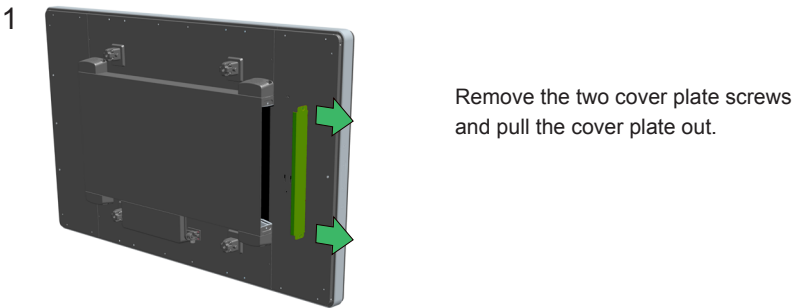
The information in this document is subject to change without notice. Elo Touch Solutions, Inc. and its Affiliates (collectively "Elo") makes no representations or warranties with respect to the contents herein, and specifically disclaims any implied warranties of merchantability or fitness for a particular purpose. Elo reserves the right to revise this publication and to make changes from time to time in the content hereof without obligation of Elo to notify any person of such revisions or changes.

No part of this publication may be reproduced, transmitted, transcribed, stored in a retrieval system, or translated into any language or computer language, in any form or by any means, including, but not limited to, electronic, magnetic, optical, chemical, manual, or otherwise without prior written permission of Elo Touch Solutions, Inc.

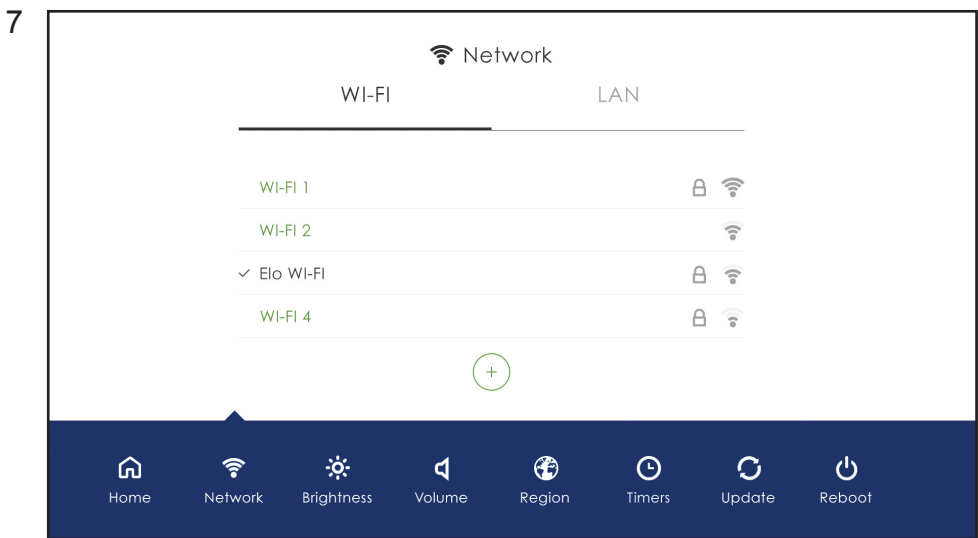
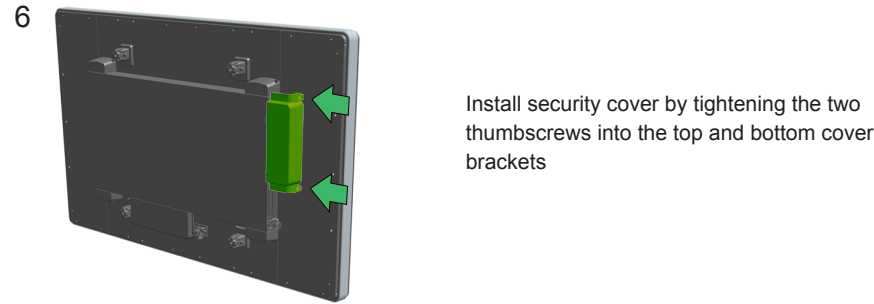
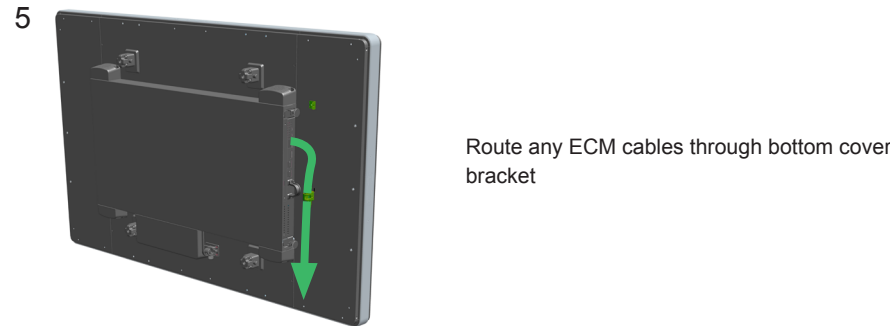
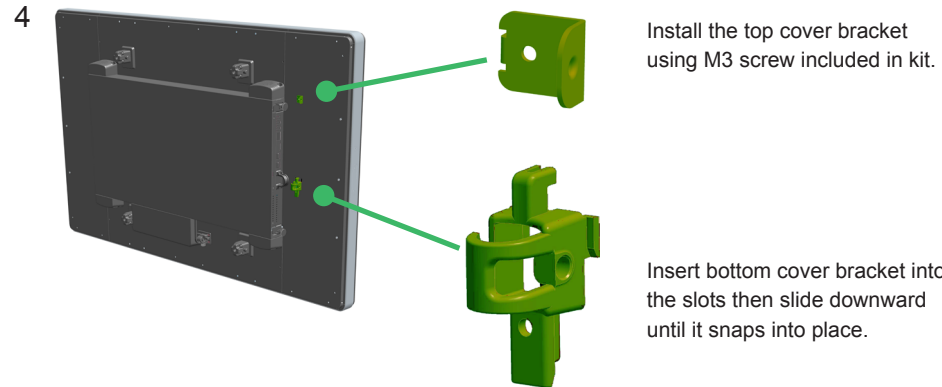
Elo (logo) and Elo Touch Solutions are trademarks of Elo and its Affiliates.

Installation

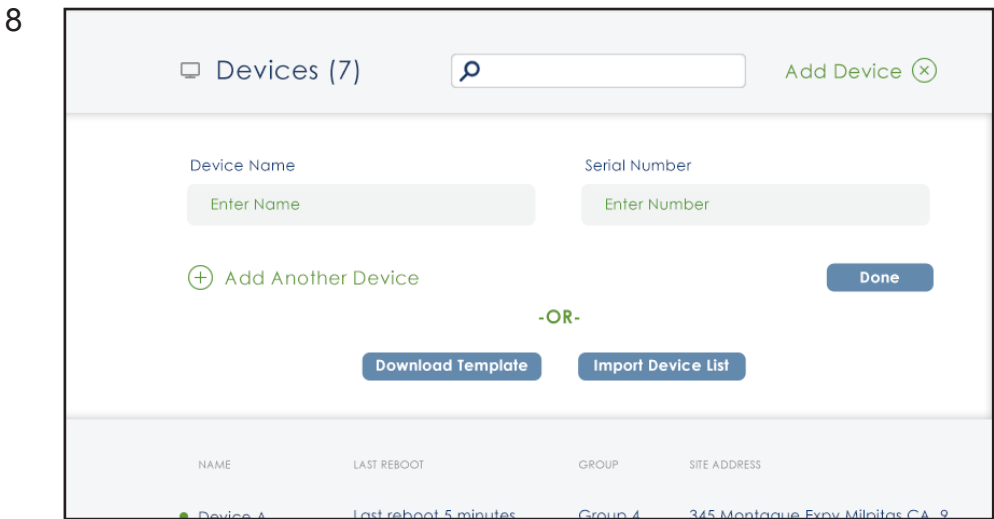
Please go to www.elotouch.com/support to download detailed user guide for this product



Security Cover Installation (optional)



After powering on the IDS Display the Network screen on the control panel will appear if no wired connection is found. Set up your wireless network. Note: The control panel can be opened any time by pressing and holding the HOME button for 10 seconds and typing in a password. The default password is 1elo.



To add your device to your EloView account, go to EloView web portal at manage.eloview.com. After logging in, go to the 'Devices' page, then click on the 'Add Device' button. Enter the device serial number and a name for the device then click 'Done'. Your device is now linked to your EloView account and will play the assigned content in safe kiosk mode.