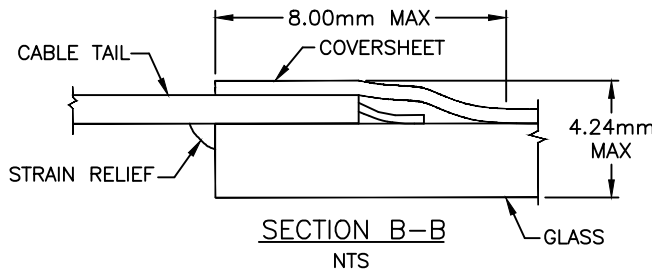
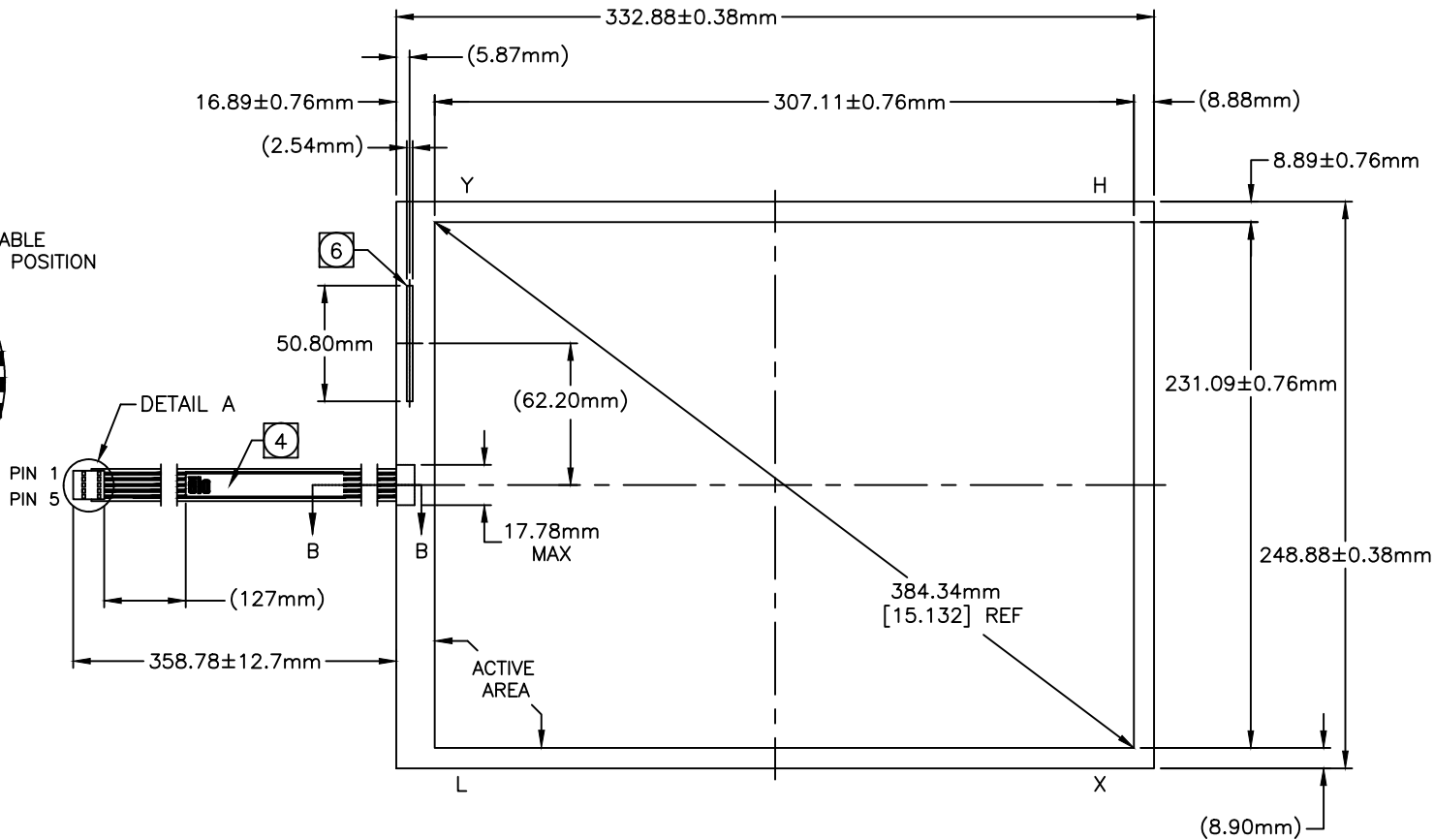
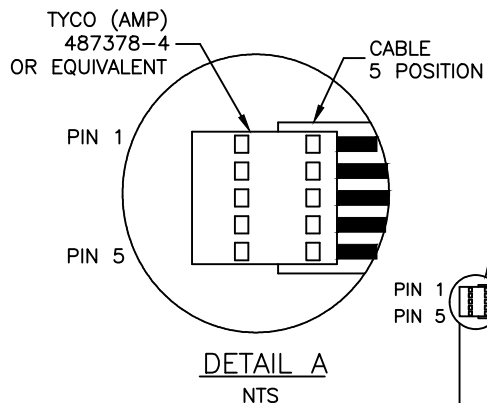


CONNECTOR PINOUT	
PIN NO.	DESIGNATION
1	H
2	X
3	S
4	Y
5	L

THIS DRAWING IS A CONTROLLED DOCUMENT. DRAWING NO. MS600322



**NOTES:**

- GLASS THICKNESS 3.18mm NOMINAL.
- FINISHED PART THICKNESS 3.48mm NOMINAL.
- FINISHED PART THICKNESS AT CABLE ATTACHMENT AREA 4.24mm MAX.
- LABEL TO BE ATTACHED TO FRONT SIDE OF CABLE.
- CABLE IS ATTACHED TO THE LEFT SIDE OF TOUCHSCREEN AT CENTER POINT AS SHOWN.
- FINISHED PART THICKNESS AT THE COVERSHEET CONTACT 3.86mm MAX.

LOC	
DIST	

P	LTR	REVISION RECORD	DATE	DWG	APVD
C		REV PER ECO-13-0174, REMOVED TOUCH SOLUTIONS FROM LOGO	06/01/13	DI	
B		REVISED PER ECO-12-015013 ELO TITLE BLOCK WAS TE	09/10/12	DI	
A		INITIAL RELEASE	03/31/06		

DIMENSIONS: mm		TOLERANCES UNLESS OTHERWISE SPECIFIED:	
		0	PLC ± -
		1	PLC ± -
		2	PLC ± -
		3	PLC ± -
		4	PLC ± -
ANGLES ± -			
SURFACE TEXTURE		N/A	

DWG	MATERIAL	ACCUTOUCH	HEAT TREAT
CHK			
APVD			
NAME			
DIMENSIONAL DRAWING, SCN-A5-FLT15.0-Z01-0H1-R			
SCALE	SIZE	DRAWING NO	SHEET
1:1	A2	MS600322	1 of 1
			REV C