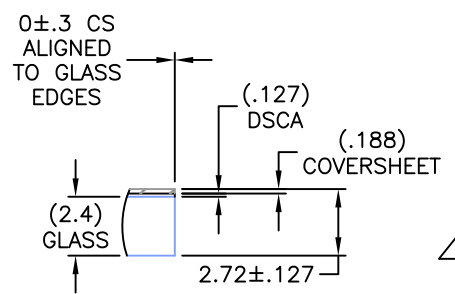
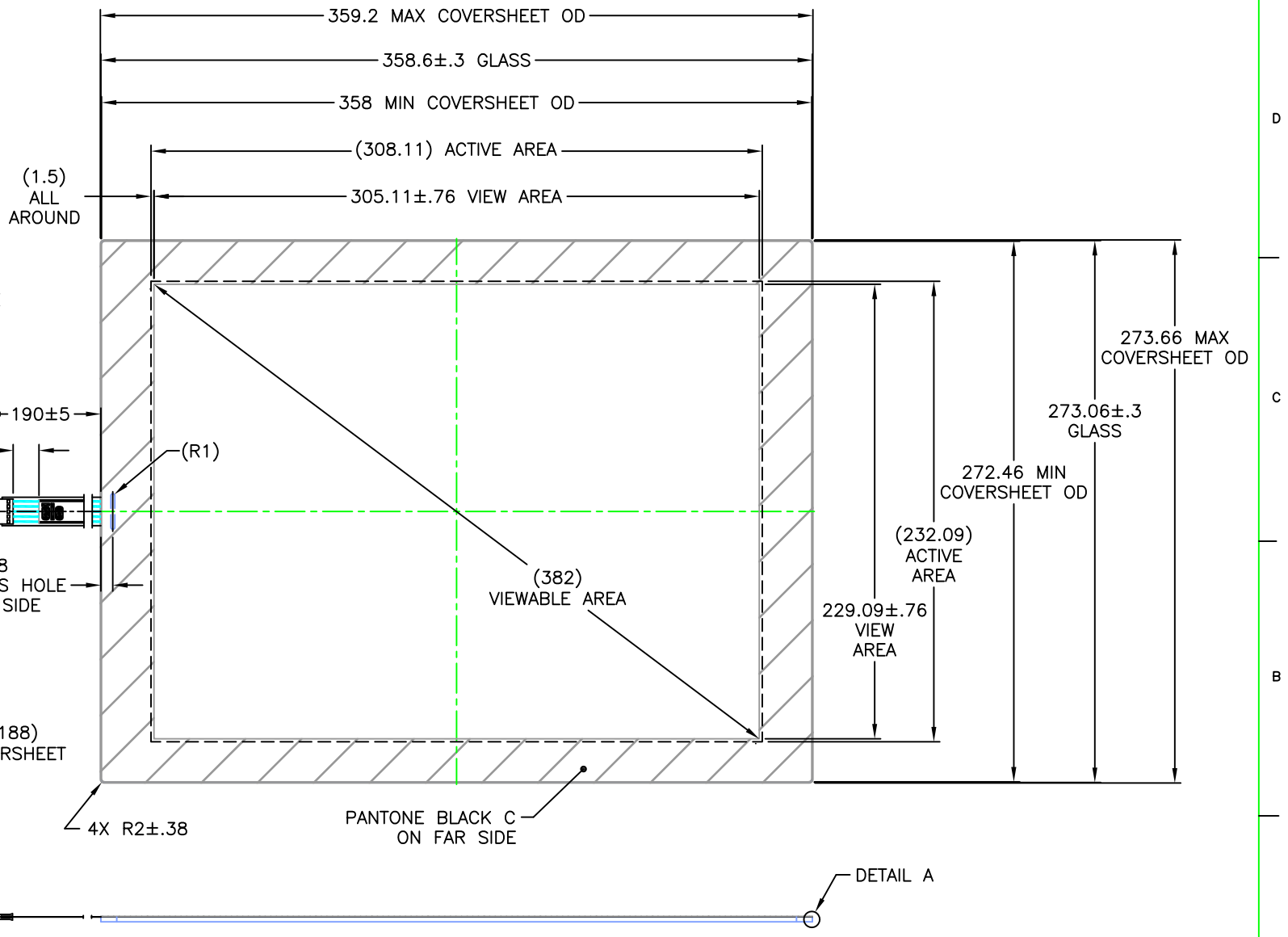
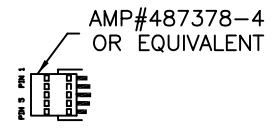


THIS DRAWING IS A CONTROLLED DOCUMENT. MS601147

CONNECTOR PINOUT	
PIN NO.	DESIGNATION
1	H
2	X
3	S
4	Y
5	L



DETAIL A

- NOTES:**
- GLASS THICKNESS 2.4mm NOMINAL.
 - FINISHED PART THICKNESS 2.72mm±0.127mm.

REV	DESCRIPTION	DATE	BY	CHK
F	REV PER ECO-13-0133, REMOVED TOUCH SOLUTIONS FROM LOGO	05/24/13	DI	
E	ECO-13-001763: UPDATED FA DWG W/ SCN THICKNESS ±0.2 WAS ±0.127	01/30/13	QC	QC
D	ECO-12-016938: CHANGED TO ACF TAPE P/N E215780	10/31/12	BC	LG
P	LTR REVISION RECORD			

DIMENSIONS:	mm
TOLERANCES UNLESS OTHERWISE SPECIFIED:	
0 PLC ± -	
1 PLC ± -	
2 PLC ± -	
3 PLC ± -	
4 PLC ± -	
ANGLES:	-
SURFACE TEXTURE:	N/A

DATE	05/06/11	MATERIAL	RESISTIVE (ACCU TOUCH)	HEAT TREAT	
Q.C.					
DATE	01/09/12	APPROVED			
Q.C.					
DIMENSIONAL DRAWING, SCN-A5-FZT15.0-Z02-0H1-R					
SCALE	1:1	SIZE	A2	DRAWING NO	MS601147
SHEET	1	OF	1	REV	F

THE INFORMATION CONTAINED HEREIN IS UNCLASSIFIED EXCEPT WHERE SHOWN OTHERWISE. IT IS THE POLICY OF THE U.S. GOVERNMENT TO MAKE AVAILABLE TO THE PUBLIC INFORMATION THAT IS NOT OTHERWISE RESTRICTED BY EXECUTIVE ORDER 13526, 13526-1, OR 13526-2.