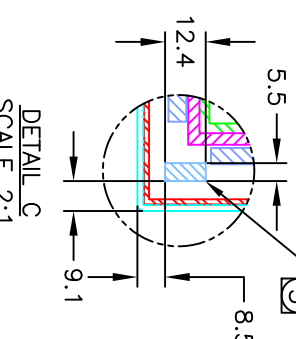
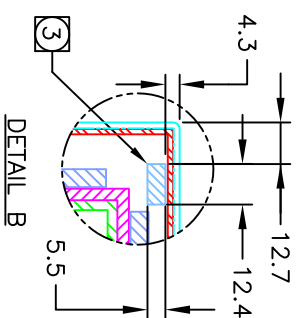
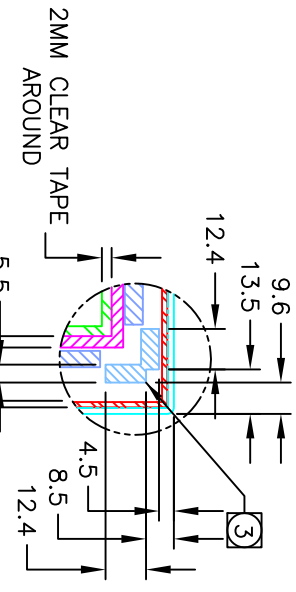


CONNECTION CHART

PIN	SIGNAL	INSULATION COLOR	JACKET COLOR
1	GROUND	OVERBALL SHIELD	
2	KEY	BLU	BLK
3	Y RECEIVE (+)	BLU	GRY
4	Y TRANSMIT (+)	BLK	BLK
5	Y RECEIVE (-)	BLK	GRY
6	GROUND	INNER SHIELD	
7	X TRANSMIT (+)	RED	RED
8	X TRANSMIT (-)	RED	BLK
9	X RECEIVE (+)	GRN	RED
10	X TRANSMIT (+)	GRN	BLK
11	X RECEIVE (-)	WHT	BLK
12	KEY		



- NOTES:
1. ALL DIMENSIONS ARE IN MILLIMETERS.
 2. GLASS THICKNESS: 2.8±0.2mm (CLEAR FINISH).
 3. TRANSDUCERS KEEP OUT AREAS PER DETAILS A THRU C. HEIGHT OF TRANSDUCER ABOVE GLASS SURFACE: 3.2mm MAX.
 4. BERG 65043-031, 2x6 HOUSING WITH BERG 48239-000 RECEPTACLES, DIRECTLY MATES WITH ANY OF THE FOLLOWING:
 - > INTELLITOUCH SERIAL CONTROL BOARD
 - > 012226 CABLE (2x6 TO 8" DB9 BULKHEAD)
 5. SURFACE QUALITY SPECIFICATION PER ELO'S ESS000051.
 6. SCREEN IS DESIGNED TO FIT INTO A STANDARD SCREEN 15.0" LCD DISPLAY (4:3 ASPECT RATIO).
 7. MOUNTING TAPE 3M VHB 4920 3.0mm WIDE BY .4mm THICK TO BE APPROXIMATELY CENTERED IN THE MOUNTING AREA.

DETAIL A
SCALE 2:1

DETAIL B
SCALE 2:1

DETAIL C
SCALE 2:1

- LOG
- | | | |
|----|------|----|
| 08 | DIST | 08 |
|----|------|----|

REV	DESCRIPTION	DATE	BY	APP
A	INITIAL RELEASE PER ECO-12-001547 01/14/13	01/14/13	AV	LA
B	ECO-13-0196: UPDATE DRAWING AND ADD E436229 AT TABULATION	06/29/13	AV	LA

DIMENSIONS (MM)		DIMENSIONS (INCHES)	
0	PIC ± .8	0	PIC ± .031
1	PIC ± .4	1	PIC ± .016
2	PIC ± .2	2	PIC ± .008
4	PIC ± .1	4	PIC ± .004

REV	DATE	BY	APP	DESCRIPTION
DD	01/14/13	AV	LA	
LA	01/14/13	AV	LA	

PART NUMBER TABULATION	
PART NUMBER	SURFACE FINISH
E350331	CLEAR
E436229	1-SIDED AG

THIS INFORMATION IS CONFIDENTIAL AND PROPRIETARY TO ELO TOUCH SOLUTIONS INC. AND ITS RELATED SUBSIDIARIES. IT IS NOT TO BE DISCLOSED TO ANYONE, OTHER THAN ELO PERSONNEL, WITHOUT AUTHORIZATION FROM ELO (WWW.ELOTOUCH.COM).