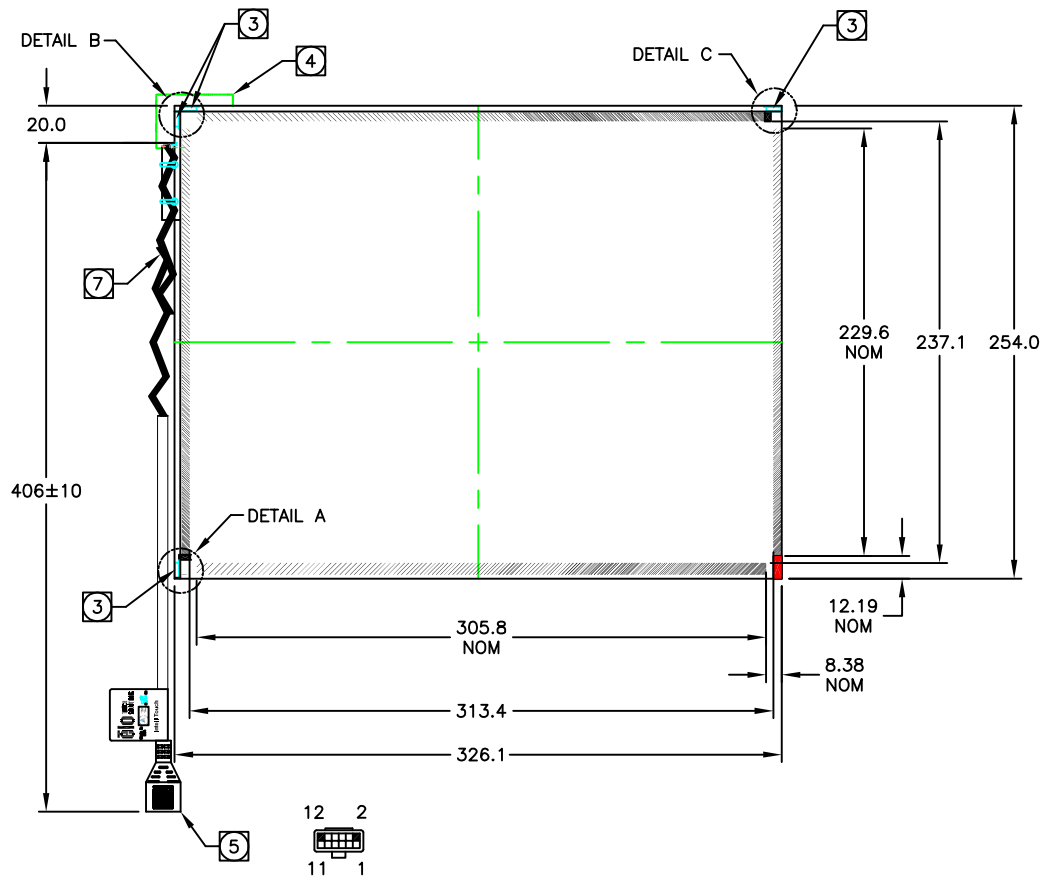


THIS DRAWING IS A CONTROLLED DOCUMENT: MS600931

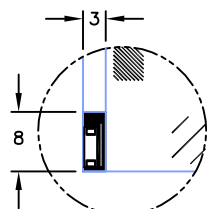


**NOTES:**

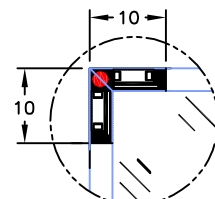
- 1 ALL DIMENSIONS ARE IN MILLIMETERS.
- 2 GLASS THICKNESS: 3.0±0.3.
- 3 TRANSDUCERS ARE LOCATED AT THE POSITIONS SHOWN. GLASS IS BEVELED UNDER TRANSDUCERS. HEIGHT OF TRANSDUCERS ABOVE GLASS: 1.5 MAXIMUM.
- 4 CABLE ROUTING ADDS A MAXIMUM OF 2.5 AS INDICATED ON THE SCREEN. CABLE IS ROUTED ALONG THE BEVEL.
- 5 BERG 65043-031, 2x6 HOUSING WITH BERG 48239-000 RECEPTACLES, DIRECTLY MATES WITH ANY OF THE FOLLOWING:  
 -INTELLITOUCH SERIAL CONTROL BOARD  
 -012226 CABLE (2x6 TO 8" DB9 BULKHEAD)
- 6 THE TOUCH ACTIVE AREA IS LESS THAN THE VIEWABLE AREA TO FACILITATE SEALING.
- 7 CABLE JACKET STRIPPED 135 FOR EASE DURING THE INTEGRATION PROCESS.

**CONNECTION CHART**

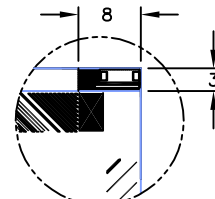
| PIN | SIGNAL         | INSULATION COLOR | JACKET COLOR |
|-----|----------------|------------------|--------------|
| 1   | GROUND         | OVERALL SHIELD   |              |
| 2   | KEY            |                  |              |
| 3   | Y RECEIVE (+)  | BLU              | BLK          |
| 4   | Y TRANSMIT (+) | BLU              | GRY          |
| 5   | Y RECEIVE (-)  | BLK              | BLK          |
| 6   | Y TRANSMIT (-) | YEL              | GRY          |
| 7   | GROUND         | INNER SHIELD     |              |
| 8   | X TRANSMIT (-) | RED              | RED          |
| 9   | X RECEIVE (-)  | RED              | BLK          |
| 10  | X TRANSMIT (+) | GRN              | RED          |
| 11  | X RECEIVE (+)  | WHT              | BLK          |
| 12  | KEY            |                  |              |



DETAIL A  
SCALE: 4/1



DETAIL B  
SCALE: 4/1



DETAIL C  
SCALE: 4/1

THIS INFORMATION IS UNCLASSIFIED AND UNCONTROLLED. ANY USE OF THIS INFORMATION IS AT THE USER'S RISK. SUBSTITUTES BY ANY MEANS ARE NOT BE PROVIDED TO ANYONE OTHER THAN ELO PERSONNEL. CONTACT AUTHORITY FOR THIS ELO [www.elo.com](http://www.elo.com)

LOC 08  
DIST 08

| REV | DESCRIPTION   | DATE     | BY | APPV |
|-----|---|----------|----|------|
| D   | ECO-12-019930: NO CHANGES; ALIGN REV WITH SD                            | 11/13/12 | BC | LA   |
| C   | ECO-12-015663: NEW ID LABEL 761019 VERT ORIENTATION; REMOVED TOLERANCES | 08/31/12 | BC | LA   |
| B   | REVISED PER ECO-11-023549 REMOVED INCH DIMENSIONS                       | 01/10/12 | DI |      |
| P   | LTR REVISION RECORD   |          |    |      |

|                |  |
|----------------|--|
| DIMENSIONS: mm | TOLERANCES UNLESS OTHERWISE SPECIFIED:<br>0 PLC ± .8<br>1 PLC ± .4<br>2 PLC ± .2<br>3 PLC ± .1<br>4 PLC ± .1 |
| ANGLES: ± 1/2° | SURFACE TEXTURE N/A  |

|  |          |                        |                       |
|--|----------|------------------------|-----------------------|
| DWG: LEO A   | 06/06/10 | MATERIAL: INTELLITOUCH | HEAT TREAT: ANTIGLARE |
| CHK: LA  | 06/06/10 | <b>elo</b>             |                       |
| APVD: RONEY  | 06/05/10 |                        |                       |
| DIMENSIONAL DRAWING,<br>SCN-IT-FLT15.0-005-009-B-R |          |                        |                       |
| SCALE: 1:1   | SIZE: A2 | DRAWING NO: MS600931   | SHEET: 1 OF 1         |