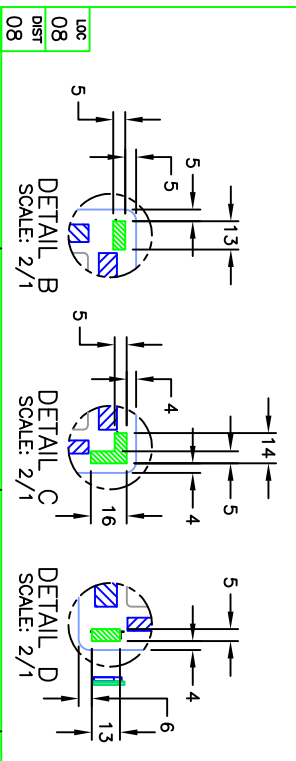


**CONNECTION CHART**

PIN	SIGNAL	INSULATION COLOR	JACKET COLOR
1	GROUND	OVERALL SHIELD	
2	KEY		BLK
3	Y RECEIVE (+)	BLU	BLK
4	Y TRANSMT (+)	BLU	GRY
5	Y RECEIVE (-)	BLK	BLK
6	Y TRANSMT (-)	YEL	GRY
7	GROUND	INNER SHIELD	
8	X TRANSMT (-)	RED	RED
9	X RECEIVE (-)	RED	BLK
10	X TRANSMT (+)	GRN	RED
11	X RECEIVE (+)	WHT	BLK
12	KEY		BLK

- NOTES:**
- 1 ALL DIMENSIONS ARE IN MILLIMETERS.
  - 2 GLASS THICKNESS: 2.8mm
  - 3 TRANSDUCER KEEP OUT AREAS PER DETAILS B THRU D. HEIGHT OF TRANSDUCERS ABOVE GLASS: 3.2 MAX.
  - 4 NO MATERIAL EXTENDS MORE THAN 0.8 BEYOND THE BACK SURFACE OF THE GLASS.
  - 5 BERG 65043-031, 2 X 6 HOUSING WITH BERG 48239-000 RECEPTACLE. DIRECTLY MATES WITH ANY OF THE FOLLOWING: >INTELLITOUCH SERIAL CONTROL BOARD >012226 CABLE (2 X 6 TO 8" DB9 BULKHEAD)
  - 6 RECOMMENDED SEALING MATERIAL IS LOW DENSITY, CROSS LINKED, CLOSED CELL POLYOFIN FOAM, SUCH AS VOLARA TS. THE ADHESIVE SHOULD NOT TOUCH THE GLASS.
  - 7 MOUNTING TAPE 3M VHB 4920 3.0 WIDE BY .4 THICK TO BE APPROXIMATELY CENTERED IN THE MOUNTING AREA.
  - 8 SCREEN IS DESIGNED TO FIT INTO A 18.5" LOD (WIDE FORMAT 16:9 ASPECT RATIO).



REV	DATE	BY	APPD	DESCRIPTION
A	09/04/12	DI		INITIAL RELEASE PER ECO-12-022026 REGION RECORD

**DIMENSIONS**

0 PIC ± .1  
1 PIC ± .1  
2 PIC ± .1  
4 PIC ± .1

**FINISHES**

0 POLYURETHANE  
1 POLYURETHANE  
2 POLYURETHANE  
4 POLYURETHANE

**DATE** 07/31/12

**INTERRUPTIBLE** INTELLITOUCH

**HEAT TREAT**

**SCALE** 1:1

**SIZE** A2

**SCN** IT-FZM18.5-006-020-R

**DIMENSIONAL DRAWING**

**MS601353**

**SHEET** 1 OF 1

**REV** A

THIS INFORMATION IS CONFIDENTIAL AND PROPRIETARY TO ELD TECH SOLUTIONS INC AND ITS VENDOR'S SUBSIDIARIES. IT MAY NOT BE DISCLOSED TO ANYONE, OTHER THAN ELD PERSONNEL, WITHOUT AUTHORIZATION FROM ELD@ELDTOLUCH.COM.