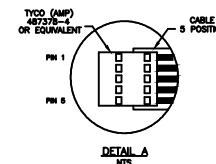
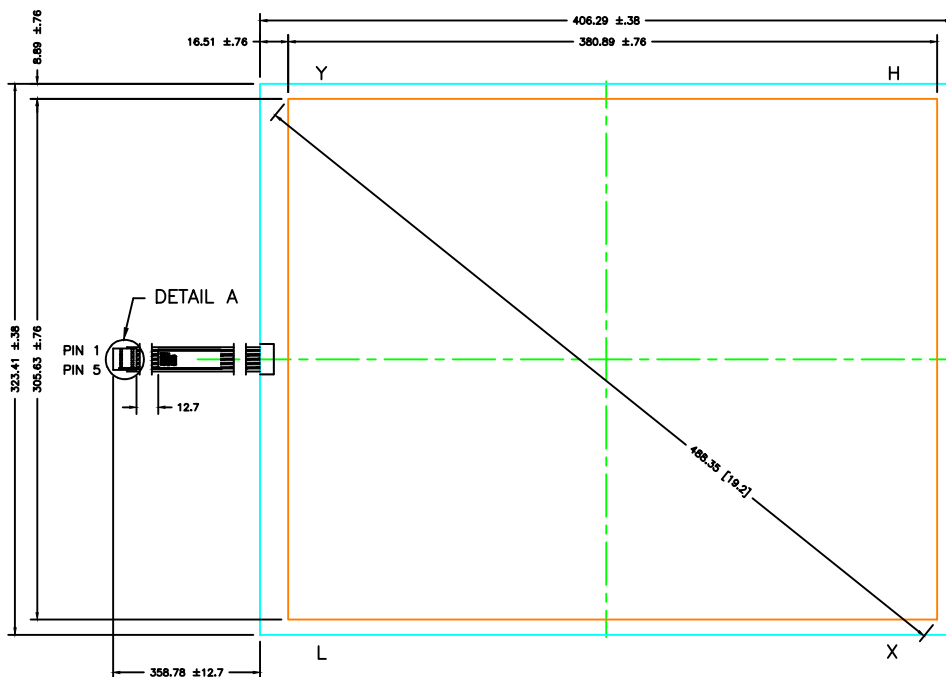


CONNECTOR PINOUT

PIN NO.	DESIGNATION
1	H
2	X
3	S
4	Y
5	L

THIS DRAWING IS A CONTROLLED DOCUMENT.



THIS INFORMATION IS CONFIDENTIAL AND PROPRIETARY TO ELO TOUCH SOLUTIONS. IT IS NOT TO BE DISCLOSED TO ANYONE, OTHER THAN ELO PERSONNEL, WITHOUT THE AUTHORIZATION FROM ELO (www.elotouch.com).

LOC
DIST

NOTES:
1. GLASS THICKNESS 3.18mm NOMINAL.
2. FINISHED PART THICKNESS 3.48 +0.5mm/-0.0mm.

REV	DESCRIPTION	DATE	BY	CHK
D	REV PER ECO-13-0127, REMOVED TOUCH SOLUTIONS FROM LOGO	05/10/13	DI	
C	ECO-12-014008: REBRANDED TO ELO TOUCH SOLUTIONS	8/22/12	BC	SS
B	ECO-11-007277 FINISHED PART THICKNESS 3.48 +0.5mm/-0.0mm.	4/19/11	RB	
P	LTR REVISION RECORD			

DIMENSIONS:	TOLERANCES UNLESS OTHERWISE SPECIFIED:
mm	0 PLC ± .8
	1 PLC ± .4
	2 PLC ± .2
	3 PLC ± -
	4 PLC ± -
ANGLES ±	-
SURFACE TEXTURE	√

DWN	Q. CHUNG	10/17/05	MATERIAL	ACCUTOUCH	HEAT TREAT	-					
CHK	-	-									
APVD	Q. CHUNG	10/17/05									
NAME	DIMENSIONAL DRAWING, SCN-AT-FLT19.0-Z01-0H1-R										
SCALE	1:1	SIZE	A2	DRAWING NO	MS500758	SHEET	1	OF	1	REV	D