

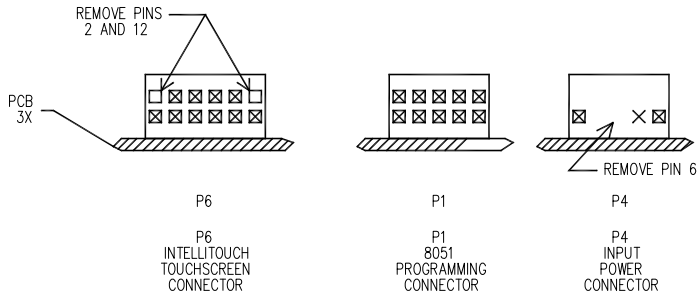
6 APPLY BAR CODE / SERIAL NUMBER / COUNTRY OF ORIGIN / ASSEMBLY REVISION LETTER LABEL IN THIS REGION. LABEL MAY OVERLAY EXISTING BATCH CODE LABEL. DO NOT OVERLAY EXISTING SILKSCREEN



NOTES :

1. CAUTION - ELECTROSTATIC DISCHARGE SENSITIVE DEVICE. DEGRADED PERFORMANCE OR DESTRUCTION WILL OCCUR IF CIRCUIT BOARD ASSEMBLY IS MISHANDLED.
2. REFER TO GERBER FILES .ASC FOR COMPONENT ASSEMBLY LOCATIONS.
3. CIRCUIT BOARD MUST BE ASSEMBLED USING RoHS COMPLIANT, LEAD FREE PROCESS.
4. ACCEPTABILITY SHALL BE PER IPC-A-610A OR MOST RECENT REVISION FOR CLASS 2 ELECTRONIC DEVICES.
5. THRU-HOLE LEAD TRIMMING: COMPONENT LEADS PROTRUDING THROUGH THE PCB SHALL HAVE A MINIMUM LEAD LENGTH SUCH THAT THE LEAD END IS VISIBLE IN THE SOLDER AND EXHIBIT NO EVIDENCE OF CUTTING INTO THE SOLDER FILLET.
6. APPLY LABEL IN INDICATED LOCATION. LABEL SHALL HAVE PRINTED:
 - "REV X" WHERE "X" IS THE REVISION OF EXXXXXX
 - ELO SERIAL NUMBER IN HUMAN-READABLE BARCODE FORMAT
 - MADE IN <INSERT COUNTRY OF ORIGIN>
 SERIAL NUMBER FORMAT SHALL FOLLOW ELO SPECIFICATION MP500310
 BARCODE FORMAT SHALL COMPLY TO ISO/IEC 16388:2007 CODE 39 OR ISO/IEC 15417:2007 CODE 128 SYMBOLOGIES
 BACODE QUALITY, AFTER APPLYING LABEL TO FRAME, SHALL BE GRADE B OR BETTER PER ISO 15416.
7. FINISHED ASSEMBLY SHALL BE PLACED IN AN ANTI-STATIC BAG AND SEALED WITH A STATIC SENSITIVE WARNING LABEL. APPLY BAR CODE / SERIAL NUMBER / COUNTRY OF ORIGIN / ASSEMBLY REVISION LETTER LABEL ELO P/N E716668 TO THE OUTSIDE OF BAG.
8. SEE SD602682 SHEET2. APPLY MODEL/PART# LABEL, ELO P/N E716668 TO SECONDARY SIDE OF PCB ASSEMBLY IN THE AREA SHOWN. THIS LABEL IS TO BE APPLIED SUCH THAT IT OVERLAYS THE EXISTING SILKSCREEN MODEL AND PART NUMBER MARKINGS.

LABEL MARKING TO BE:
MODEL : CTR-XXXX-XXXXXX
PART# EXXXXXX
9. INSTALL ELO P/N 210002 ONTO JUMPER J3 BETWEEN PIN 1 AND PIN 2 (FOR DEFAULT POWER SOURCE SETTING OF EXTERNAL POWER ON CONNECTOR P4)



TOP VIEW

D	ECO-13-0107	ADDED NEW PART NUMBER AND CHANGED NOTE, REV #	3/20/2013	HJ	VP
C	ECO-13-013278	ADDED NOTE FOR J3 JUMPER DEFINITION	07/25/2012	VP	VP
B		REMOVED REV FROM BACKSIDE LABEL			
		CORRECTED CONNECTOR REFERENCE DESIGNATOR P4		HJ	RD
		ADD PINS DEFIN OF P1, P4 AND P6			
		RELEASE ECO-11-00827			
A		INITIAL RELEASE PER ECO-11-008827	4/27/2011	HJ	GKC
P	LTR	REVISION RECORD	DATE	DWN	APVD

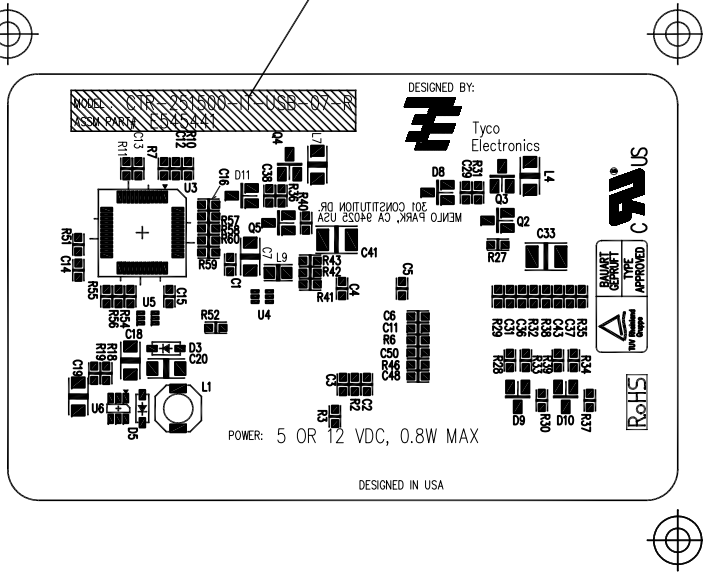
DIMENSIONS:		TOLERANCES UNLESS OTHERWISE SPECIFIED:	
mm		0 PLC	± 1.00
		1 PLC	± 0.76
		2 PLC	± 0.38
		3 PLC	± 0.25
		4 PLC	± 0.20
ANGLES ±	5		
SURFACE TEXTURE	N/A		

DWN	HJ	3/20/2013	MATERIAL	iTouch+	HEAT TREAT	N/A					
CHK						N/A					
APVD	VINCENT	3/20/2013									
NAME							ASSEMBLY DRAWING, CONTROLLER, 2515-07,2521				
SCALE	1:1	SIZE	A4	DRAWING NO	SD602682	SHEET	1	OF	2	REV	D

THIS DRAWING IS A CONTROLLED DOCUMENT. DWG NO SD602682

PART NO.
E545441 CTR-251500-IT-USB-07-R
E156921 CTR-252100-IT-USB-00-R

9 APPLY MODEL/PART# LABEL AT THIS LOCATION, SUCH THAT IT OVERLAYS THE EXISTING SILKSREEN MODEL AND PART NUMBER MARKINGS.



BOTTOM VIEW

THIS INFORMATION IS CONFIDENTIAL AND PROPRIETARY TO TYCO ELECTRONICS CORPORATION AND ITS WORLDWIDE SUBSIDIARIES AND ELECTRONICS PERSONNEL. IT IS TO BE KEPT STRICTLY CONFIDENTIAL FROM TYCO ELECTRONICS CORPORATION, HARRISBURG, PENNSYLVANIA USA.

LOC 08
DIST 08

AMP 3307-7 REV 31MAR2000

P	LTR	REVISION RECORD	DATE	DWN	APVD
		SEE SHEET 1			

DIMENSIONS:		TOLERANCES UNLESS OTHERWISE SPECIFIED:	
mm		0 PLC ± 1.00	
		1 PLC ± 0.76	
		2 PLC ± 0.38	
		3 PLC ± 0.25	
		4 PLC ± 0.20	
ANGLES ± 5		SURFACE TEXTURE N/A	

DWN	HJ	3/20/2013	MATERIAL	iTouch+	HEAT TREAT	N/A
CHK						N/A
APVD	VINCENT	3/20/2013				
NAME ASSEMBLY DRAWING, CONTROLLER, 2515-07,2521						
SCALE	1:1	SIZE	A4	DRAWING NO	SD602682	SHEET
				2	OF	2
					REV	D