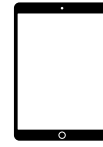




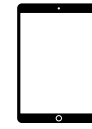
Quick Installation Guide



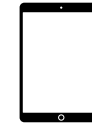
iPad®
5th Generation
32GB 128GB



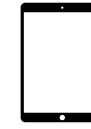
iPad Pro™
(12.9-inch)
32GB 128GB
256GB



iPad Pro
(9.7-inch)
32GB 128GB
256GB



iPad Air™ 2
16GB 32GB
64GB 128GB



iPad Air
16GB 32GB
64GB 128GB



iPad
4th Generation
16GB 32GB
64GB 128GB



1 iPad and iPad Air trays are available and labeled in the box. Install the correct tray for your iPad.



2 Remove the four mounting screws to swap mounting trays if required.



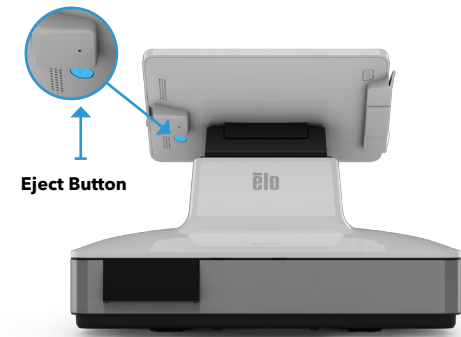
3 Ensure the Lightning™ connector is pulled out before installing the iPad.



4 Install the iPad by inserting the top side first and then Lightning connector side.



5 Insert the lightning connector into the iPad and fasten the locking screw, if desired.



6 To eject the iPad from the dock, pull the Lightning connector cap out first and then press the eject button.