



Application Note

**Elo Touch Solutions**  
**Elo<sup>®</sup> Tablet Firmware Update**

ES601079 Rev A

---

**Change History**

<b>Rev.</b>	<b>Description of Change</b>	<b>Release Date</b>	<b>Changed By</b>
A	Initial release per <b>ECO-13-0889</b> .	10/25/2013	Cherrie Soetjpto

**Copyright © 2013 Elo Touch Solutions, Inc. All Rights Reserved.**

No part of this publication may be reproduced, transmitted, transcribed, stored in a retrieval system, or translated into any language or computer language, in any form or by any means, including, but not limited to, electronic, magnetic, optical, chemical, manual, or otherwise without prior written permission of Elo Touch Solutions, Inc.

**Disclaimer**

The information in this document is subject to change without notice. Elo Touch Solutions, Inc. and its affiliates (collectively "Elo") makes no representations or warranties with respect to the contents herein, and specifically disclaims any implied warranties of merchantability or fitness for a particular purpose. Elo reserves the right to revise this publication and to make changes from time to time in the content hereof without obligation of Elo to notify any person of such revisions or changes.

**Trademark Acknowledgments**

AccuTouch, CarrollTouch, Elo, Elo (logo), Elo Touch, Elo Touch Solutions, Elo TouchSystems, IntelliTouch, iTouch, SecureTouch, TouchTools and VuPoint are trademarks of Elo and its affiliates. Windows is a trademark of Microsoft Corporation.

# Table of Contents

- 1. Introduction.....5
- 2. Checking the Installed Firmware Version.....6
- 3. Updating the Firmware .....7

# 1. Introduction

This document provides information on how to check the current firmware versions and on how to update the firmware on the main board and docking station of the Elo Tablet (hereafter referred to as the tablet). The main board and docking station firmware can both be updated via the procedure and utility specified in Chapter 3. This utility allows a user to select the new firmware file that the tablet main board and/or docking station are to be updated to.

Note: Take care to ensure that the correct firmware file is chosen. The firmware files may be obtained by contacting Elo Technical Support.

The current latest firmware versions are as follows:

## **Tablet main board firmware**

Filename: ELO-EC-V1.32.bin

The MainBoard EC Version will be listed in InfoAbout (discussed in Chapter 2) as 1.32.

## **Docking station firmware**

Filename: ELO-EC-DS-V1.26.zed

The Docking EC Version will be listed in InfoAbout (discussed in Chapter 2) as 1.26.

**Note: Please ensure that the tablet / docking station is connected to a power supply via the AC/DC power adapter kit during a firmware update. This is to ensure that power is not interrupted while the update is taking place. If power is lost while the update is in progress, the device will be rendered unusable. Once the update starts, leave the device undisturbed until the update is complete.**

If you still have questions after reading this document, please contact an Elo Touch technical representative or customer service.

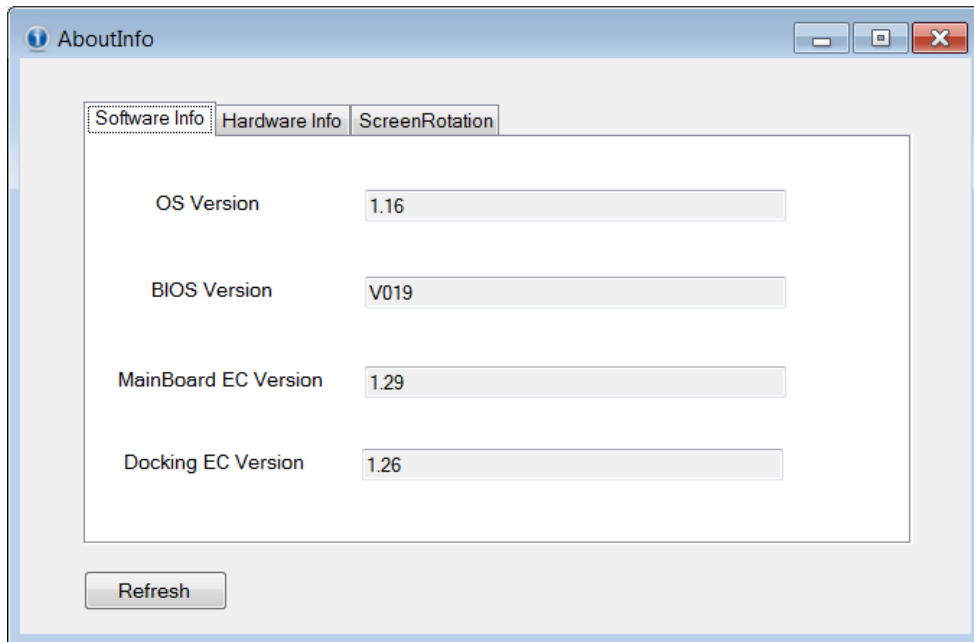
Visit <http://www.elotouch.com/Support/TechnicalSupport/default.asp> for technical support.

Refer to the last page of this user manual for Elo contact information worldwide.

## 2. Checking the Installed Firmware Version

To check the installed firmware version:

1. Navigate to the Control Panel.
2. Access InfoAbout. The InfoAbout window will display the Embedded Controller (EC) firmware versions.



*Note: The versions shown above are for example only.*

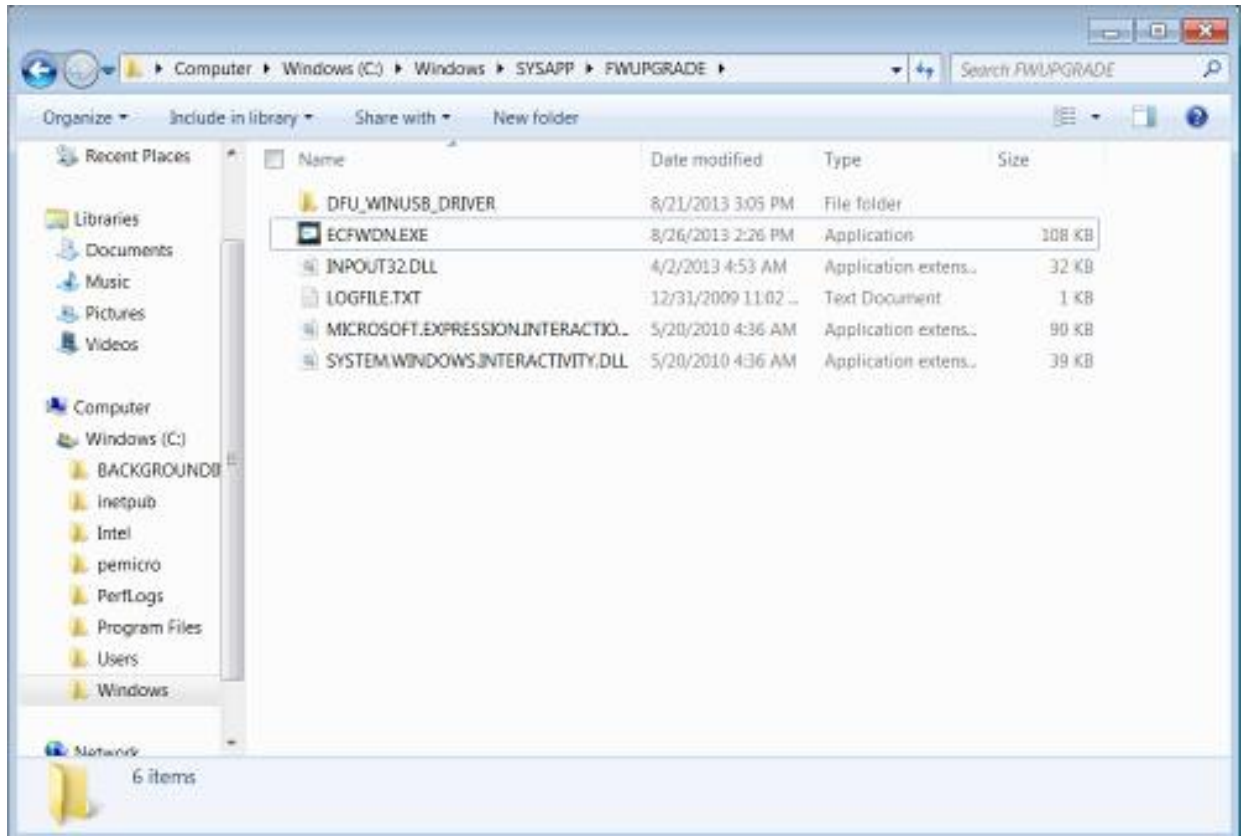
If the EC versions are not as specified in Chapter 1, proceed with the firmware update.

Separate Application Notes are available for updating the BIOS and installing a new operating system image.

### 3. Updating the Firmware

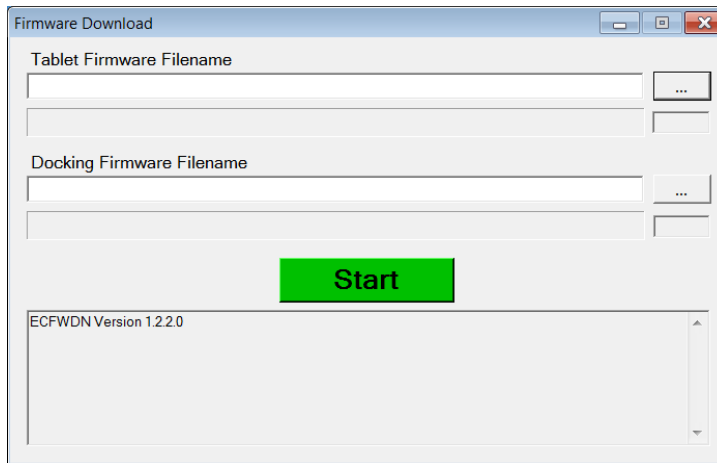
Before updating the firmware, please ensure that the tablet / docking station is connected to a power source via the AC/DC power adapter kit. To update the firmware:

1. On the Tablet, navigate to \Windows\SYSAPP\FWUPGRADE

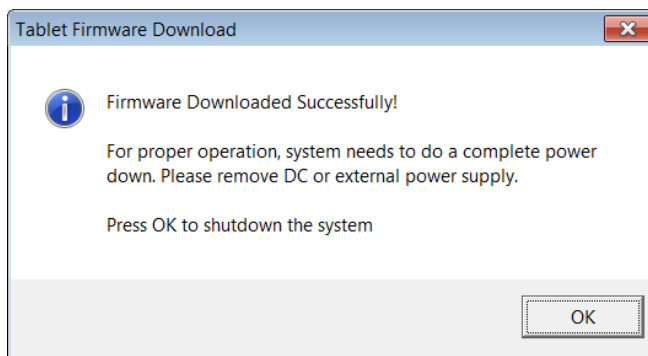


2. Right-click ECFWDN.exe and select Run as Administrator.

3. When the "Do you want to allow ..." message comes up, click **[Yes]**. This will bring up the firmware utility.



4. Plug the USB stick that contains the firmware update file into the tablet and copy the file to a known location on the Tablet's hard drive.
5. Click the [...] button to the right of the appropriate Firmware textbox (Tablet or Docking).
6. Navigate to the appropriate firmware file and double-click it. The selected filename should now appear in the appropriate Firmware textbox.
7. Click the green [Start] button - A counter will appear just below the [...] button and will begin to increment. A blue progress bar will slowly increase from left to right to demonstrate the download progress. Mouse and keyboard will be inactive while the update is in progress. The update may take several minutes, hence allow for some time for the update to complete. When done, the following message will appear:





8. As mouse may not respond, touch the OK button to shut the Tablet down. It is not necessary to remove and reinstall the battery. In the case of a Docking firmware update, you must remove the tablet from the docking station and reinstall the tablet onto the docking station.
9. Power the tablet up and check the firmware version via the procedures outlined in Chapter 2 of this document.

Check out Our Website

**www.elotouch.com**

---

Get the latest...

- Product Information
- Specifications
- Upcoming events
- Press releases
- Software drivers

## Getting in Touch with us

---

To find out more about the extensive range of Elo touch solutions, visit our website at [www.elotouch.com](http://www.elotouch.com), or simply call the office nearest you:

**North America**

Elo Touch Solutions  
1033 McCarthy Blvd  
Milpitas, CA 95035

Tel 800-ELO-TOUCH

Tel 1-408-597-8000

Fax 1-408-597-8050

[customerservice@elotouch.com](mailto:customerservice@elotouch.com)

**Europe**

Tel +32 (0) 16 70 45 00

Fax +32 (0) 16 70 45 49

[elosales@elotouch.com](mailto:elosales@elotouch.com)

**Asia-Pacific**

Tel +86 (21) 3329 1385

Fax +86 (21) 3329 1400

[www.elotouch.com.cn](http://www.elotouch.com.cn)

**Latin America**

Tel 786-923-0251

Fax 305-931-0124

[www.elotouch.com](http://www.elotouch.com)

**First Edition (October 2013)**

Copyright 2013 Elo Touch Solutions, Inc. All rights reserved.