



www.elotouch.com

Quick Installation Guide

Rear Facing Display Mount E-Series AiO Touchcomputer

Revision B
P/N E134672

Elo Touch Solutions Technical Support

Online self-help:
www.support.elotouch.com

North America

800-ELO-TOUCH
Tel +1 408 597 8000
Fax +1 408 597 8050
EloSales.NA@elotouch.com

Europe

Tel +32 (0)16 70 45 00
Fax +32 (0)16 70 45 49
elosales@elotouch.com

Asia-Pacific

Tel +86 (21) 3329 1385
Fax +86 (21) 3329 1400
EloAsia@elotouch.com

Latin America

Tel 786-923-0251
Fax 305-931-0124
EloSales.LATAM@elotouch.com

The information in this document is subject to change without notice. Elo Touch Solutions, Inc. and its Affiliates (collectively "Elo") makes no representations or warranties with respect to the contents herein, and specifically disclaims any implied warranties of merchantability or fitness for a particular purpose. Elo reserves the right to revise this publication and to make changes from time to time in the content hereof without obligation of Elo to notify any person of such revisions or changes.

No part of this publication may be reproduced, transmitted, transcribed, stored in a retrieval system, or translated into any language or computer language, in any form or by any means, including, but not limited to, electronic, magnetic, optical, chemical, manual, or otherwise without prior written permission of Elo Touch Solutions, Inc.

Elo (logo) and Elo Touch Solutions are trademarks of Elo and its Affiliates.

© 2017 Elo Touch Solutions, Inc. All rights reserved.



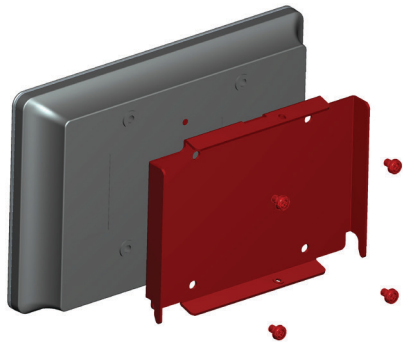
Installation



Remove the mounting screw covers from the back of the AiO and attach the bracket using the 4 screws included with the kit.



Hook the rear facing display bracket onto the AiO bracket and secure using 1 M3 screw (included in the kit) on either the top or bottom (marked by green arrows) of the bracket.



Mount the display bracket to the back of the rear facing display using the 75mm x 75mm VESA mounting holes