



[www.elotouch.com](http://www.elotouch.com)

## Quick Installation Guide

# Rear Facing Display Mount for E-Series AiO Touchcomputer

### Elo Touch Solutions Technical Support

Online self-help: [www.elotouch.com/go/websupport](http://www.elotouch.com/go/websupport)

### Technical Support contacts in your region:

[www.elotouch.com/go/contactsupport](http://www.elotouch.com/go/contactsupport)

#### North America

Elo Touch Solutions  
1033 McCarthy Boulevard  
Milpitas, CA 95035

800-ELO-TOUCH  
Tel +1 408 597 8000  
Fax +1 408 597 8050  
[customerservice@elotouch.com](mailto:customerservice@elotouch.com)

#### Europe

Tel +32 (0)16 70 45 00  
Fax +32 (0)16 70 45 49  
[elosales@elotouch.com](mailto:elosales@elotouch.com)

#### Asia-Pacific

Tel +86 (21) 3329 1385  
Fax +86 (21) 3329 1400  
[www.elotouch.com.cn](http://www.elotouch.com.cn)

#### Latin America

Tel 786-923-0251  
Fax 305-931-0124  
[www.elotouch.com](http://www.elotouch.com)

Revision A  
P/N E134672

The information in this document is subject to change without notice. Elo Touch Solutions, Inc. and its Affiliates (collectively "Elo") makes no representations or warranties with respect to the contents herein, and specifically disclaims any implied warranties of merchantability or fitness for a particular purpose. Elo reserves the right to revise this publication and to make changes from time to time in the content hereof without obligation of Elo to notify any person of such revisions or changes.

No part of this publication may be reproduced, transmitted, transcribed, stored in a retrieval system, or translated into any language or computer language, in any form or by any means, including, but not limited to, electronic, magnetic, optical, chemical, manual, or otherwise without prior written permission of Elo Touch Solutions, Inc.

Elo (logo) and Elo Touch Solutions are trademarks of Elo and its Affiliates.

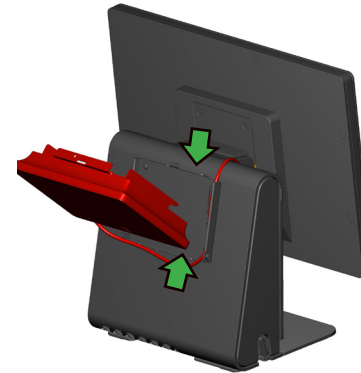
© 2014 Elo Touch Solutions, Inc. All rights reserved.



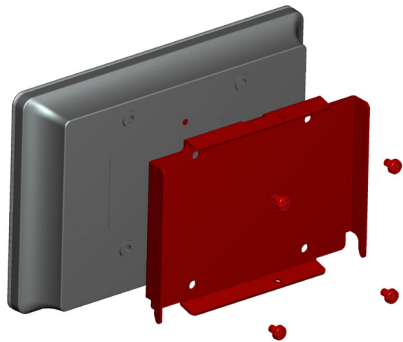
## Installation



Remove the mounting screw covers from the back of the AiO and attach the bracket using the 4 screws included with the kit.



Hook the rear facing display bracket onto the AiO bracket and secure using 1 M3 screw (included in the kit) on either the top or bottom (marked by green arrows) of the bracket.



Mount the display bracket to the back of the rear facing display using the 75mm x 75mm VESA mounting holes