

Please refer to User Guide for detailed operating, maintenance and servicing instructions.



Quick Installation Guide

1519L 15" LCD Desktop Touchmonitor

1919L 19" LCD Desktop Touchmonitor

© 2009 Tyco Electronics. All rights reserved. Elo TouchSystems, TE logo and Tyco Electronics are trademarks.



www.elotouch.com



Revision C
P/N E817333

North America
Elo TouchSystems
301 Constitution Drive
Menlo Park, CA 94025
www.elotouch.com
1-800-557-1458

Elo Technical Support
Online self-help:
www.elotouch.com/go/websupport
Technical Support contacts in your region:
www.elotouch.com/go/contactsupport

Europe
Tel +32 (0)16 35 21 00
Fax +32 (0)16 35 21 01
elosales@elotouch.com

Asia-Pacific
Tel +81 (45) 478-2161
Fax +81 (45) 478-2180
www.tps.co.jp

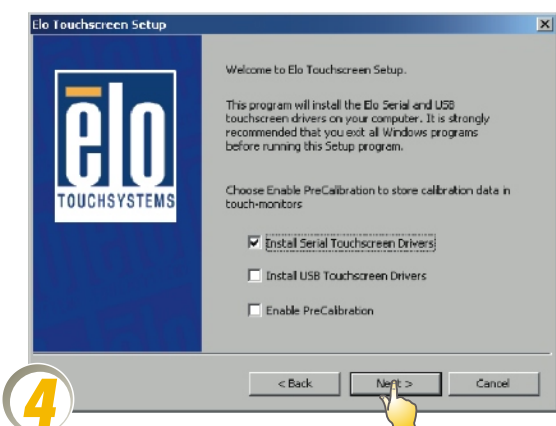
Latin America
www.elotouch.com.ar

For current Elo news, product updates and announcements, register to receive our TouchMonitor newsletter at www.elotouch.com/go/news



Our commitment. Your advantage.

IOIOI SERIAL



USB

