



Quick Installation Guide

LCD Touchmonitor and Touch Driver

www.elotouch.com

Revision E
P/N E744255

Elo Touch Solutions Technical Support

Online self-help: www.elotouch.com/go/websupport

North America

Elo Touch Solutions
301 Constitution Drive
Menlo Park, CA 94025
www.elotouch.com

Europe

Tel +32 (0)16 35 21 00
Fax +32 (0)16 35 21 01
elosales@elotouch.com

Technical Support contacts in your region:

www.elotouch.com/go/contactsupport

Asia-Pacific

Tel +81 (45) 478-2161
Fax +81 (45) 478-2180
www.tps.co.jp

Latin America

Tel 1-305-428-5210
Fax 1-305-717-4909
www.elotouch.com.ar

The information in this document is subject to change without notice. Elo Touch Solutions, Inc. and its Affiliates (collectively "Elo") makes no representations or warranties with respect to the contents herein, and specifically disclaims any implied warranties of merchantability or fitness for a particular purpose. Elo reserves the right to revise this publication and to make changes from time to time in the content hereof without obligation of Elo to notify any person of such revisions or changes.

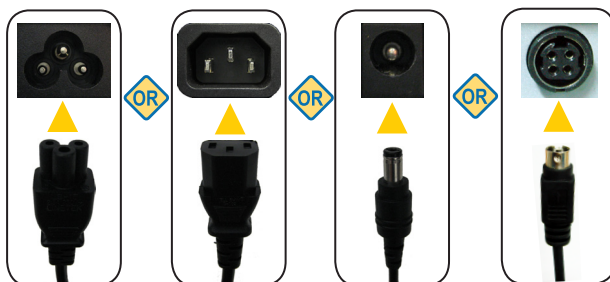
No part of this publication may be reproduced, transmitted, transcribed, stored in a retrieval system, or translated into any language or computer language, in any form or by any means, including, but not limited to, electronic, magnetic, optical, chemical, manual, or otherwise without prior written permission of Elo Touch Solutions, Inc.

Elo (logo) and Elo Touch Solutions are trademarks of Elo and its Affiliates. Windows is a trademark of Microsoft Corporation.

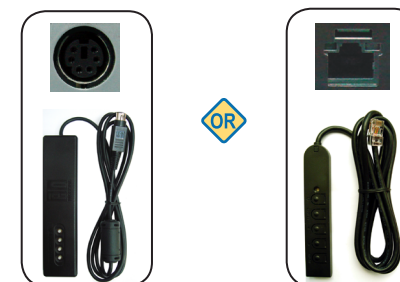
Copyright © 2012 Elo Touch Solutions, Inc. All Rights Reserved.



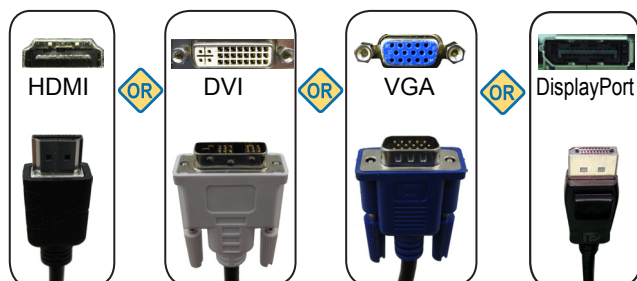
① Power



④ OSD Remote (if applicable)

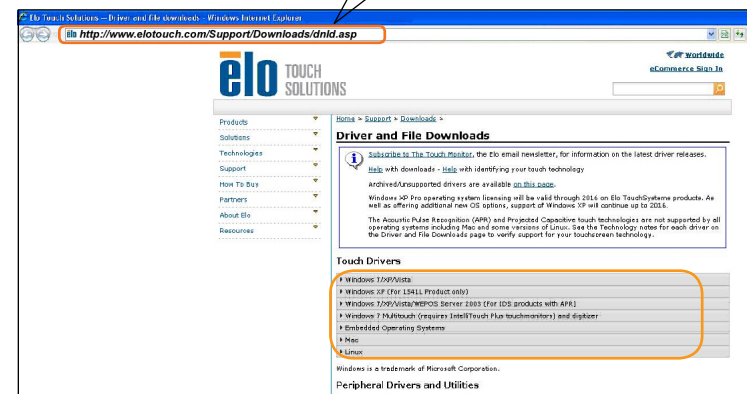


② Video



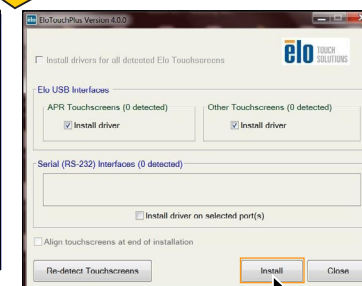
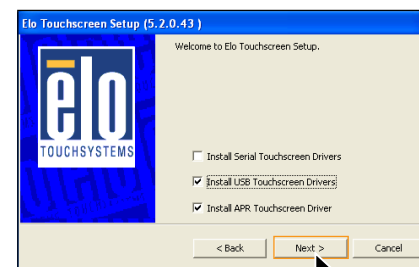
⑤ Install

<http://elotouch.com/Support/Downloads/dnld.asp>



Windows XP

Windows 7



③ Touch

